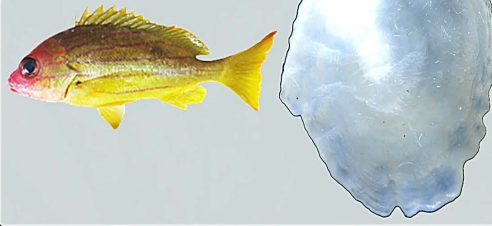


Otoliths : calcified structures of the inner-ear, lenght between 5.8 mm and 22.7 mm for the species presented, used to estimate the fish ageing and another biological information

Deep-water red snapper
Etelis carbunculus



Bluestriped snapper
Lutjanus notatus



Goldbanded jobfish
Pristipomoides multidens



Oblique-banded grouper
Epinephelus radiatus



Common bluestripe snapper
Lutjanus kasmira



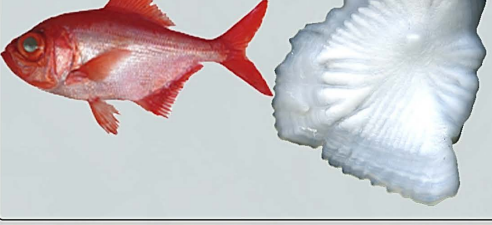
Rusty jobfish
Aphareus rutilans



Brilliant pomfret
Eumegistus illustris



Alfonsino
Beryx decadactylus



Crimson jobfish
Pristipomoides filamentosus



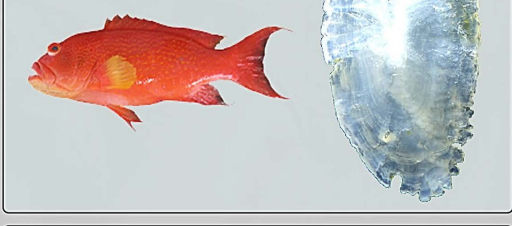
Bluefin trevally
Caranx melampygus



Yellow-edged lyretail
Variola louti



White-edged lyretail
Variola albimarginata



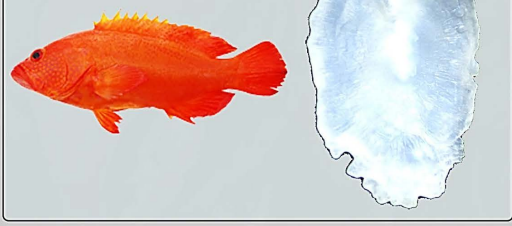
Green jobfish
Aprion virescens



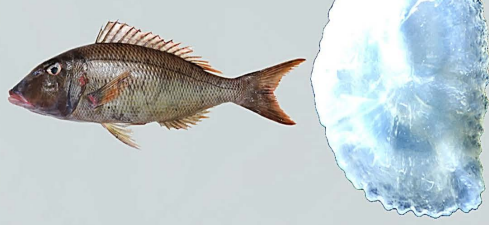
Blacktip grouper
Epinephelus fasciatus



Golden hind
Cephalopholis aurantia



Spotcheek emperor
Lethrinus rubrioperculatus



Ornate jobfish
Pristipomoides argyrogrammicus



Authors:

Mahé, K., Gentil, C., Brisset, B., Evano, H., Elleboode, R. & Roos, D.



Copyright IFREMER



version 1, 2023

