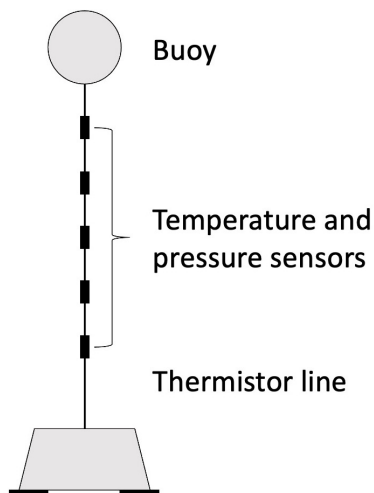


Supplementary Material

1 FIGURES

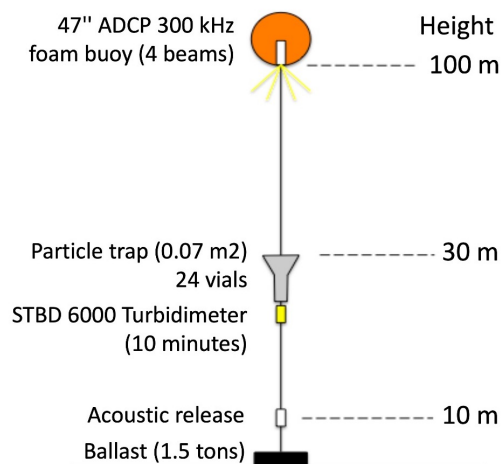
A. Mastodon-2d thermistor line



B. Cage ADCP



C. PeerGynt mooring



D. Anitra mooring

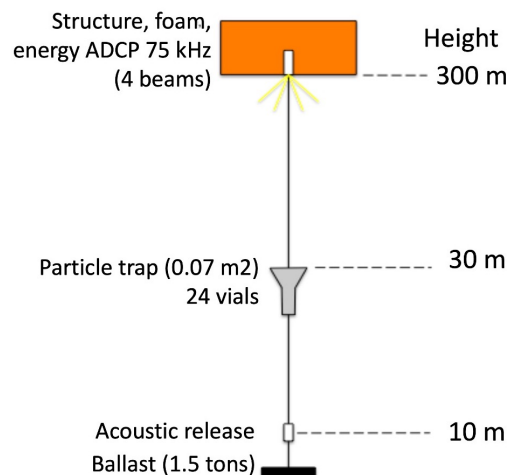


Figure S1: Measuring devices used during the UPCASt 2017 and CASSISED 2019 cruises. (A) Schema of a Mastodon-2d thermistor line (UPCASt 2017). (B) Photo of the shelf ADCP (ADCP cage, CASSISED 2019). Schemas of (C) the PeerGynt (PG1 and PG2) and (D) the Anitra moorings (CASSISED 2019).

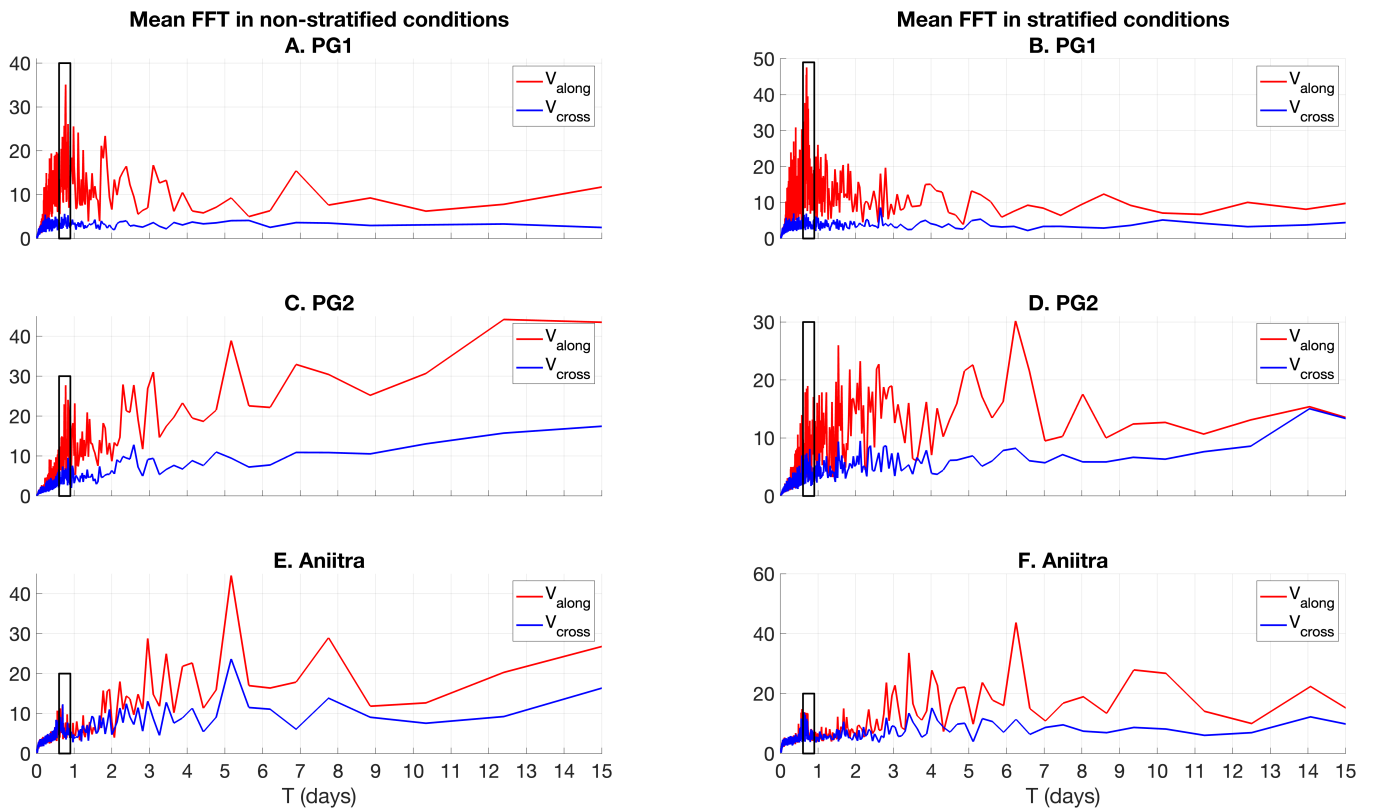


Figure S2: Fourier transform (FFT) of vertically averaged along-canyon V_{along} and cross-canyon V_{cross} velocities calculated at (A) and (B) PG1, (C) and (D) PG2 and (E) and (F) Anitra moorings under non-stratified (left) and stratified (right) conditions. The boxes frame the near-inertial period.