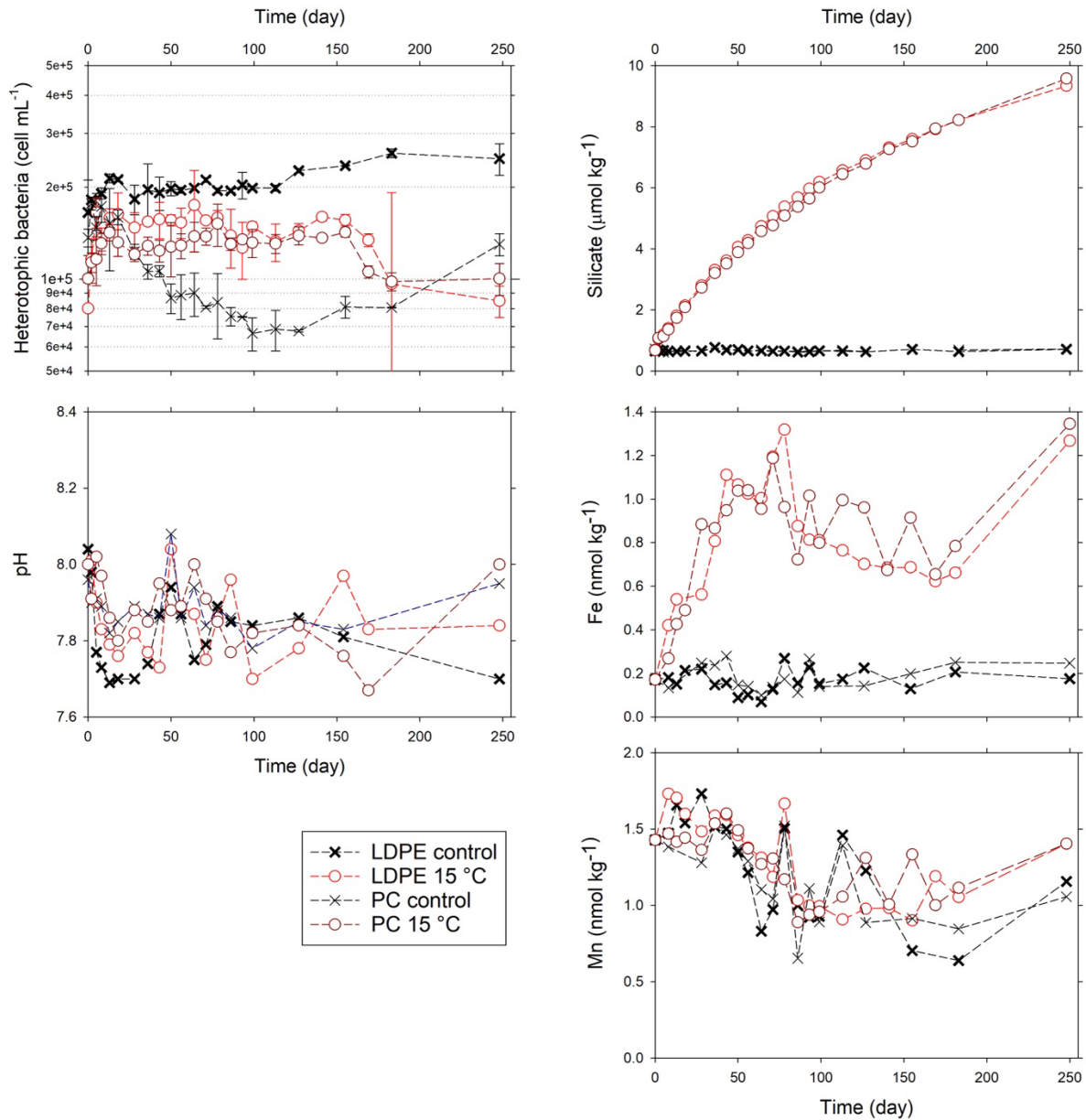
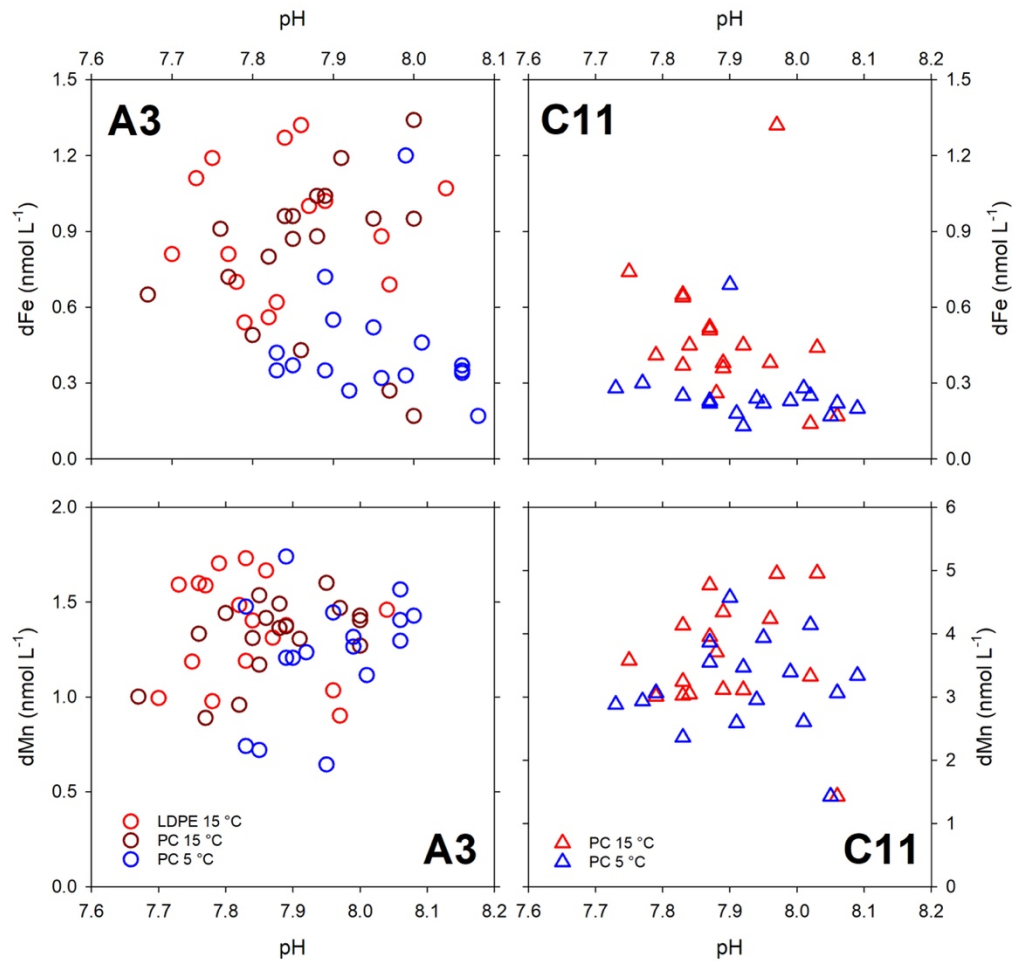


1 Supplementary materials of “The effect of temperature on the release of Si, Fe and Mn into
2 seawater from resuspended sediment particles” by Liao, W.-H., H. Planquette, B. Moriceau,
3 C. Lambert, F. Desprez de Gesincourt, E. Laurenceau-Cornec, G. Sarthou, and T. Gorgues.



4
5 Figure S1. The data comparison between the treatments carried out in both LDPE and PC
6 carboys by adding the biogenic silicate rich sediment (A3). No significant differences were
7 found for all the parameters.



8

9 Figure S2. No correlation between pH and dissolved trace metals (Fe and Mn) in this study.