

Supporting Information for “Observed structure of an internal tide beam over the Mid-Atlantic Ridge”

Clément Vic¹ and Bruno Ferron¹

¹Univ. Brest, CNRS, Ifremer, IRD, Laboratoire d’Océanographie Physique et Spatiale (LOPS), IUEM, F29280, Plouzané, France

Contents of this file

1. Figures S1 to S6 show the same content as Figure 3 in the article, for the different crossings of the section.

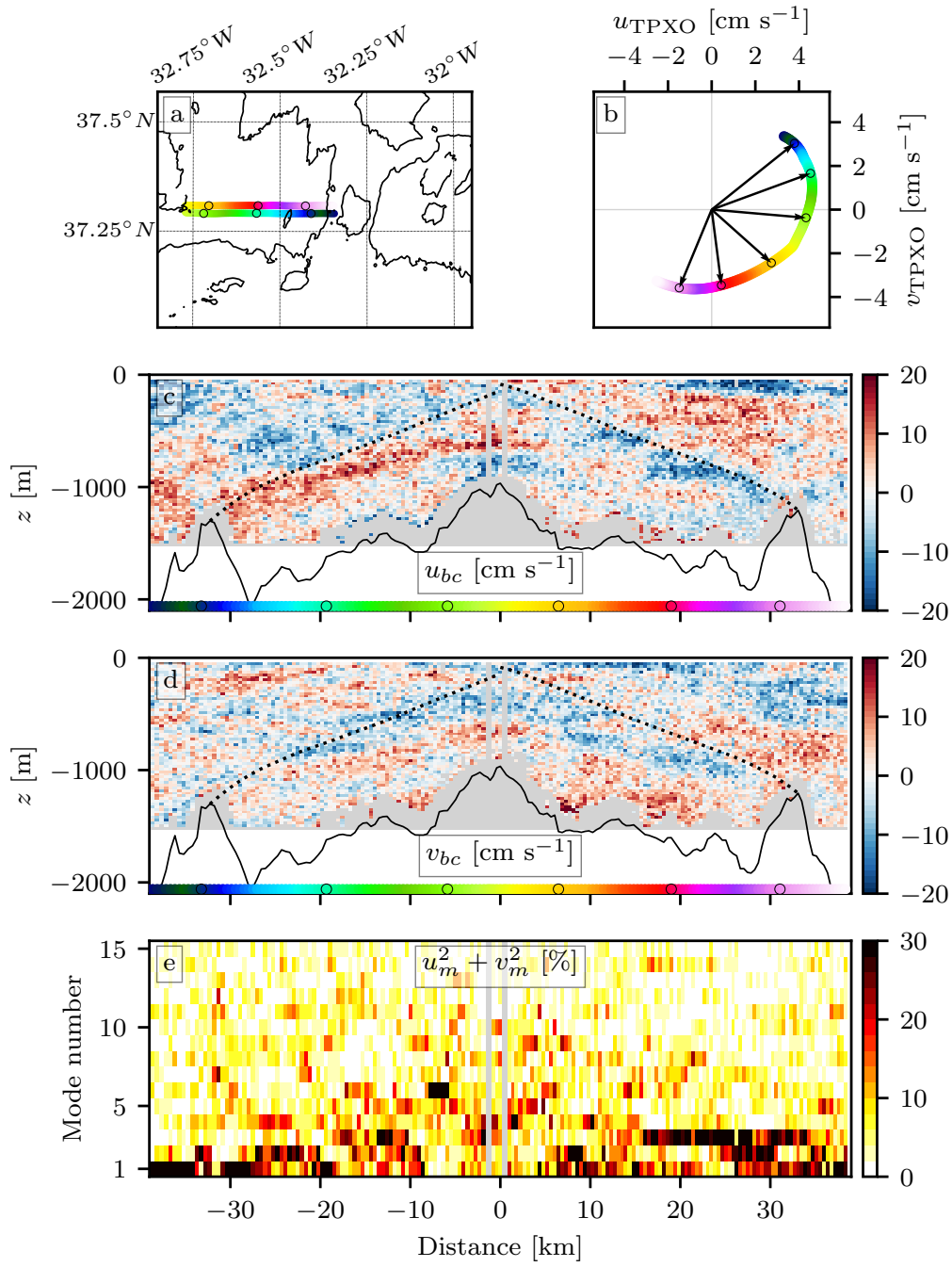


Figure S1. Same as Figure 3 in the article for the second crossing of the section.

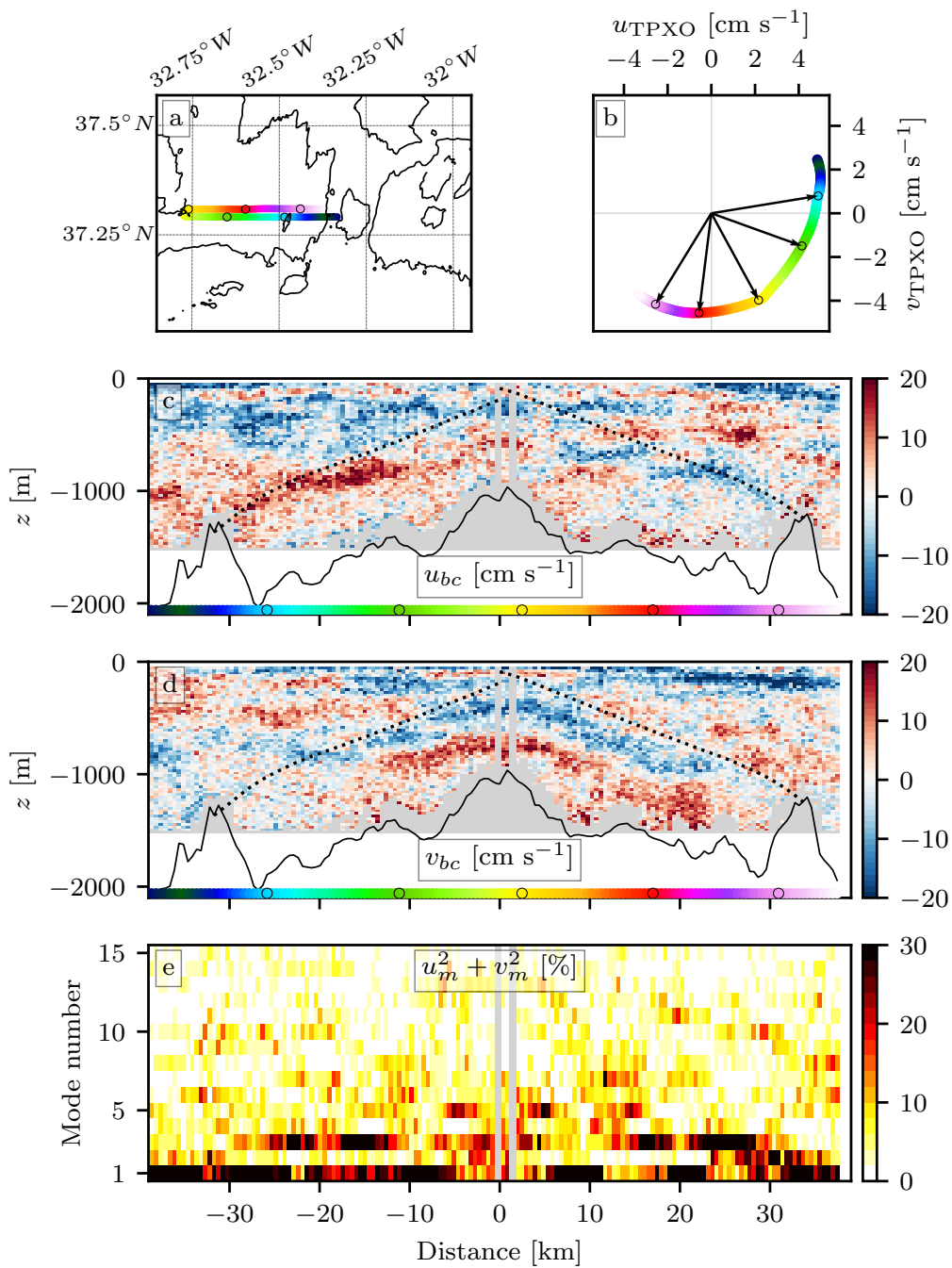


Figure S2. Same as Figure 3 in the article for the third crossing of the section.

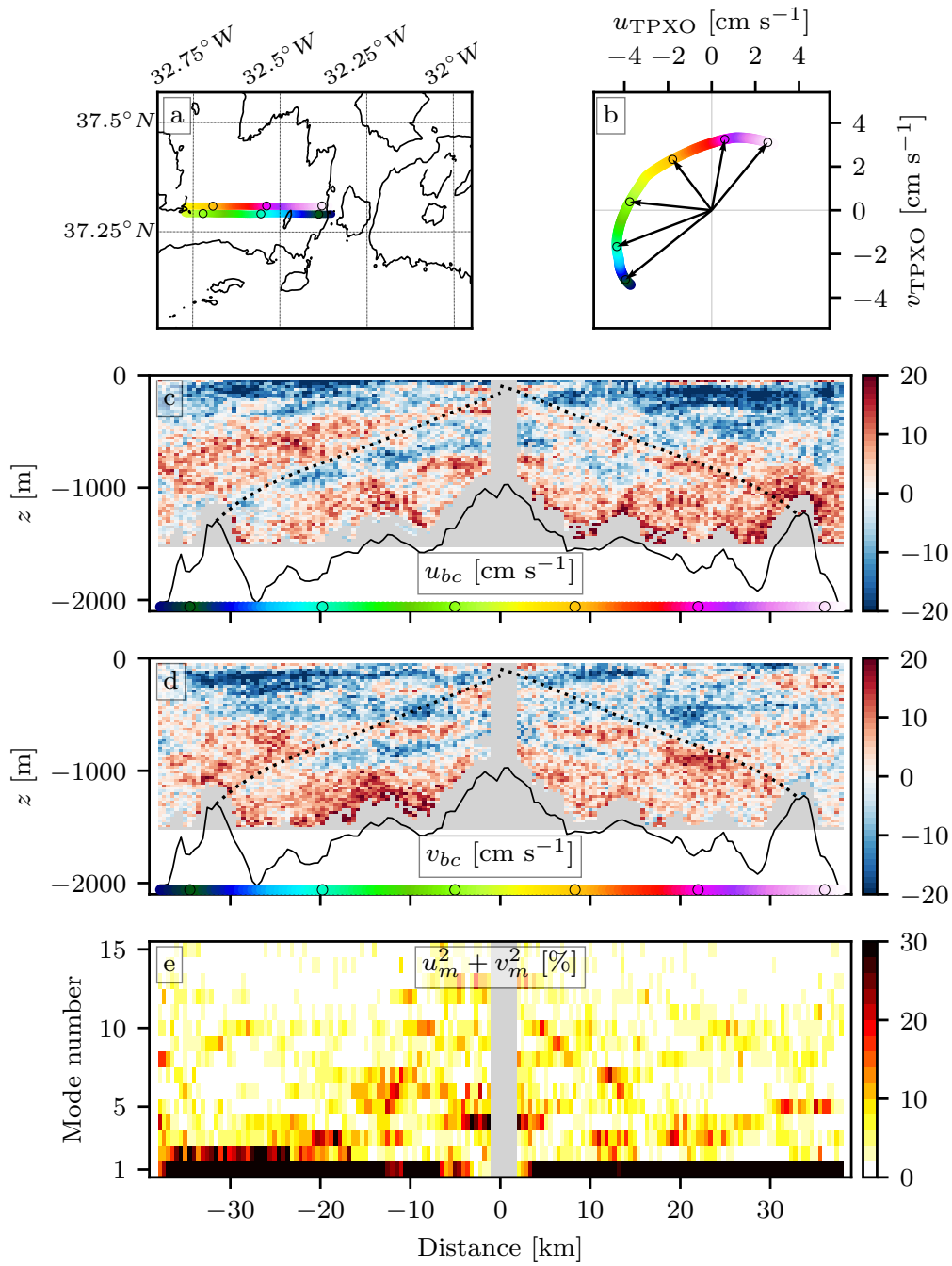


Figure S3. Same as Figure 3 in the article for the fourth crossing of the section.

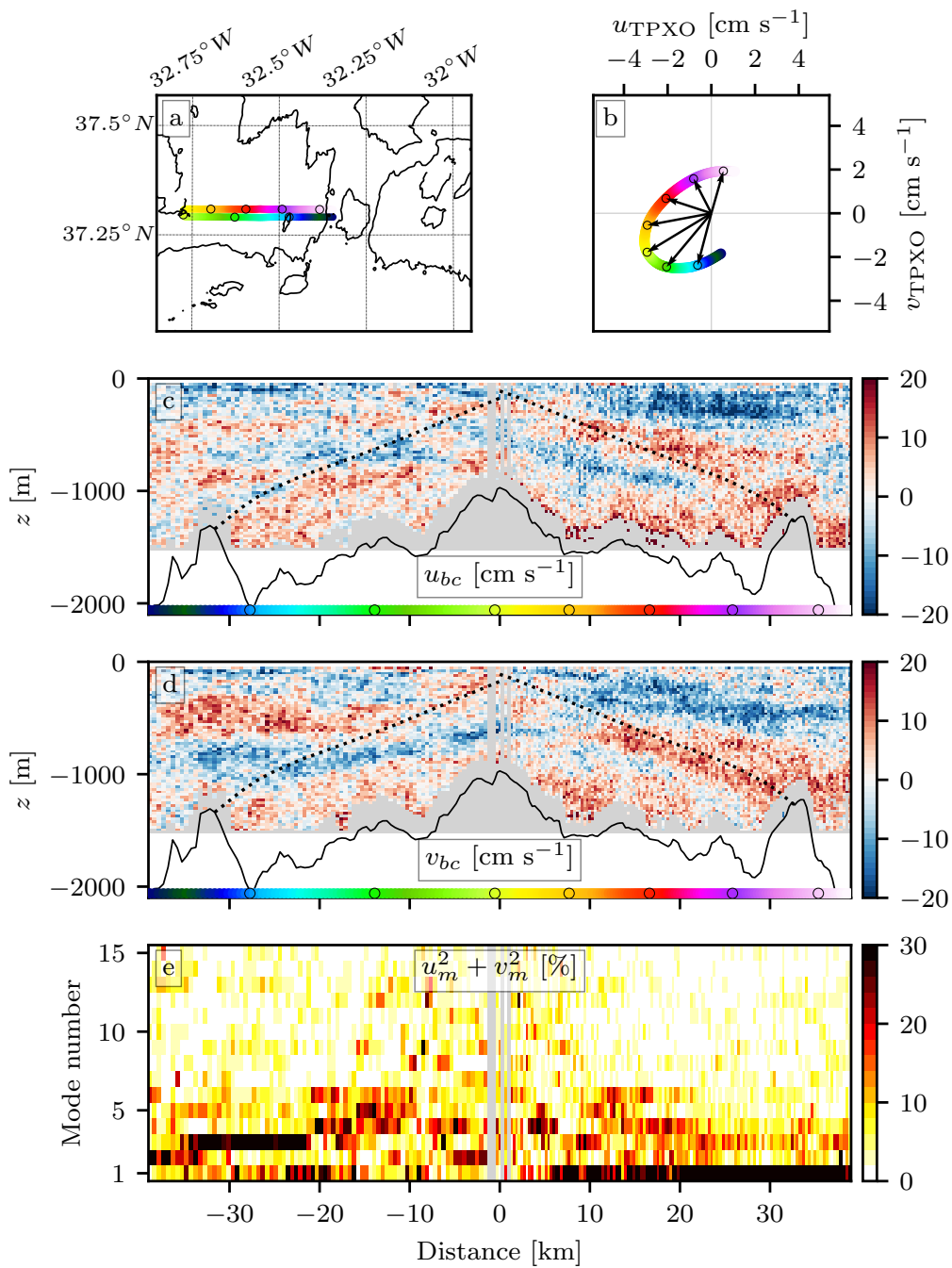


Figure S4. Same as Figure 3 in the article for the fifth crossing of the section.

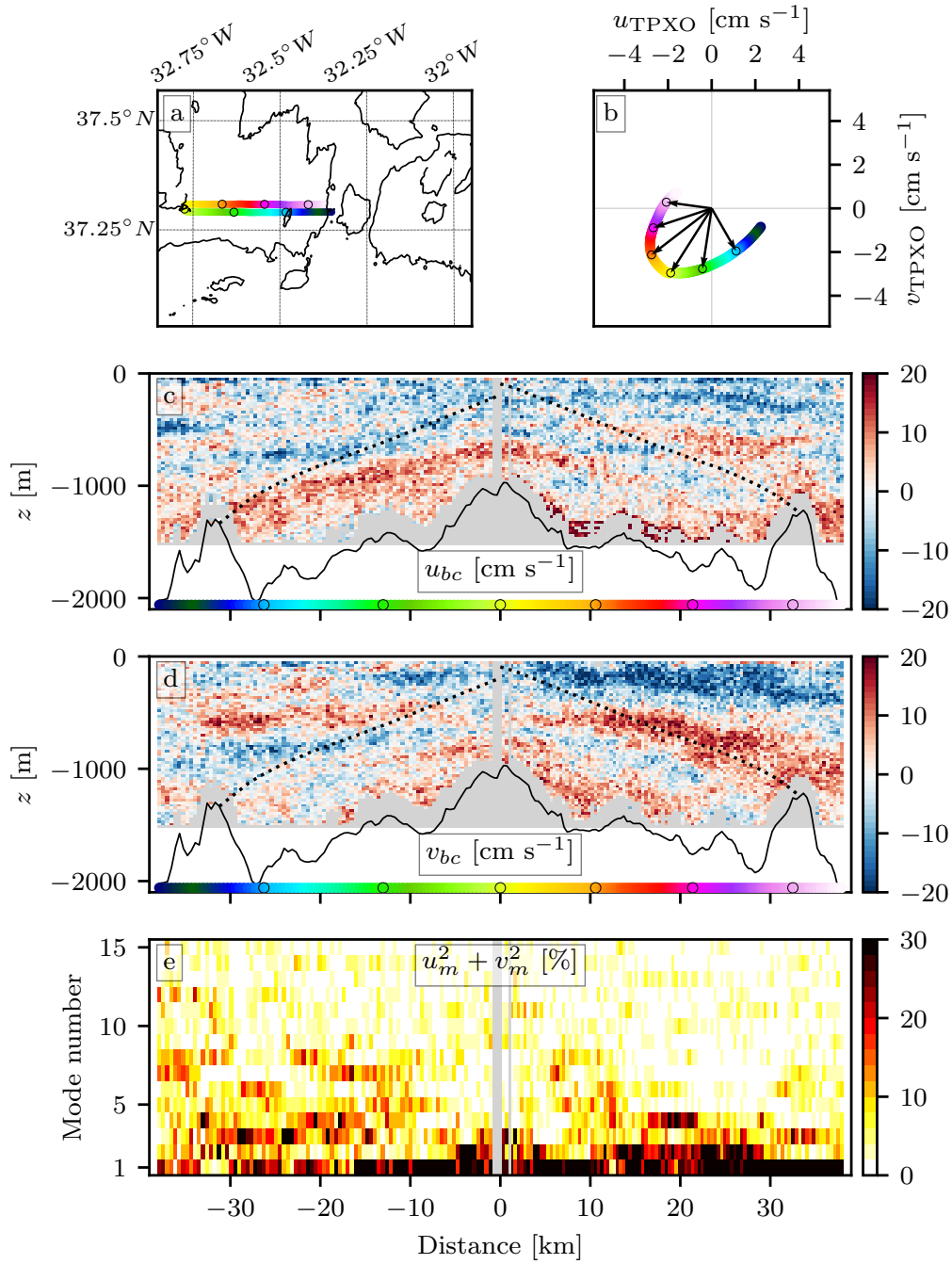


Figure S5. Same as Figure 3 in the article for the sixth crossing of the section.

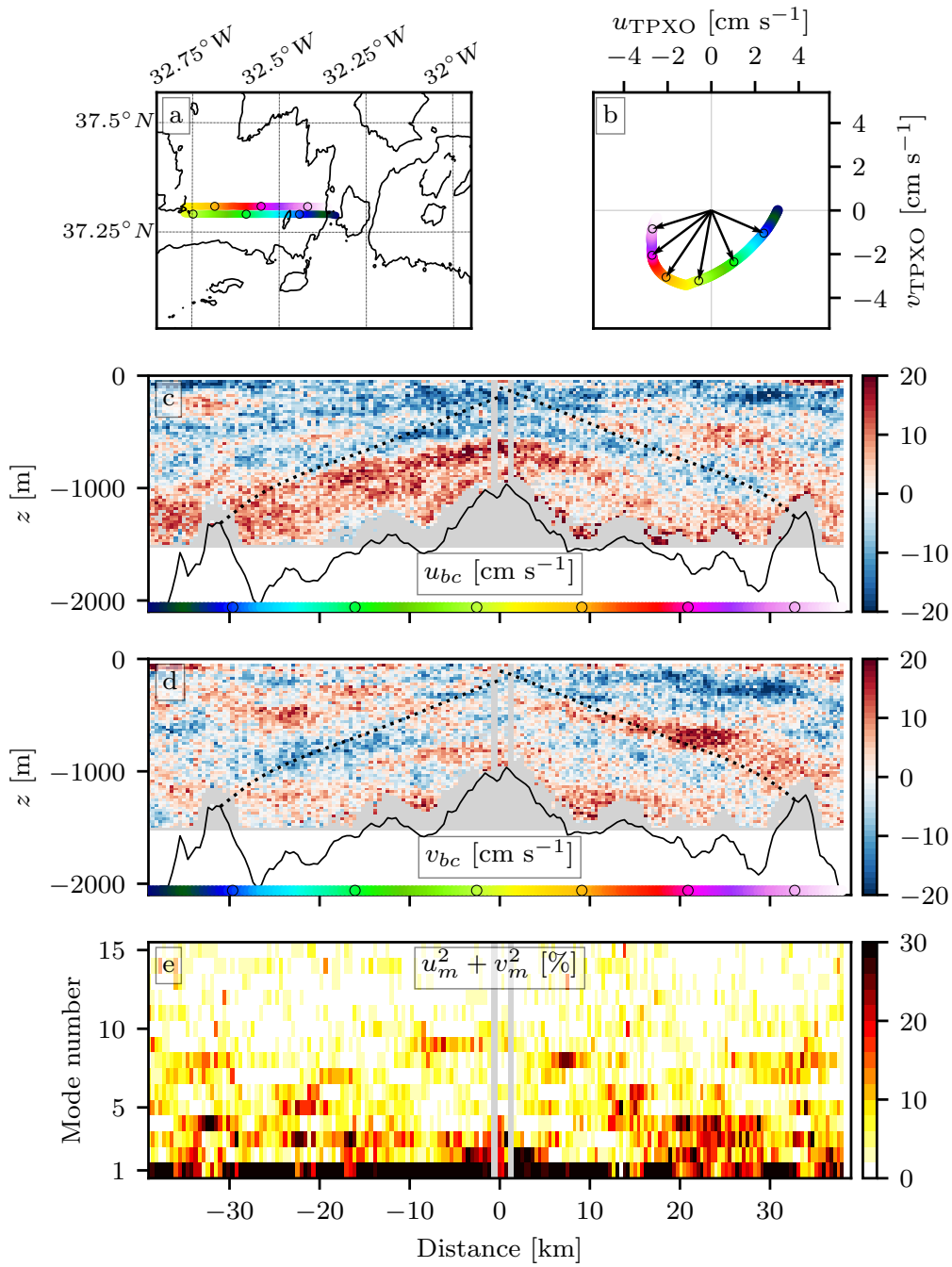


Figure S6. Same as Figure 3 in the article for the seventh crossing of the section.