

[Paleoceanography and Paleoclimatology]

Supporting Information for

Heat transport processes of the Indonesian Throughflow along the outflow pathway in the eastern Indian Ocean during the last 160 kyr

Xuan Ding^{1,2*}, Franck Bassinot³, Xiaolei Pang^{4,5}, Yingxin Kou⁶, and Liping Zhou^{4,7}

¹School of Ocean Sciences, China University of Geosciences (Beijing), Beijing, China, ²Key Laboratory of Polar Geology and Marine Mineral Resources (China University of Geosciences, Beijing), Ministry of Education, Beijing, China, ³LSCE (CEA/CNRS/UVSQ), Domaine du CNRS, Bat 12, Avenue de la Terrasse, 91198 Gif-sur-Yvette, France, ⁴Institute of Ocean Research, Peking University, Beijing, China, ⁵School of Earth and Space Sciences, Peking University, Beijing, China, ⁶Research School of Earth Sciences, Australian National University, Canberra, ACT 2601, Australia, ⁷Key Laboratory for Earth Surface Processes, Department of Geography, Peking University, Beijing, China

Contents of this file

Figures S1 to S2

Additional Supporting Information (Files uploaded separately)

Table S1

Introduction

Table S1 is the new data presented in this study (available in the figshare database: DOI: 10.6084/m9.figshare.23160137).

Additional figures are provided below:

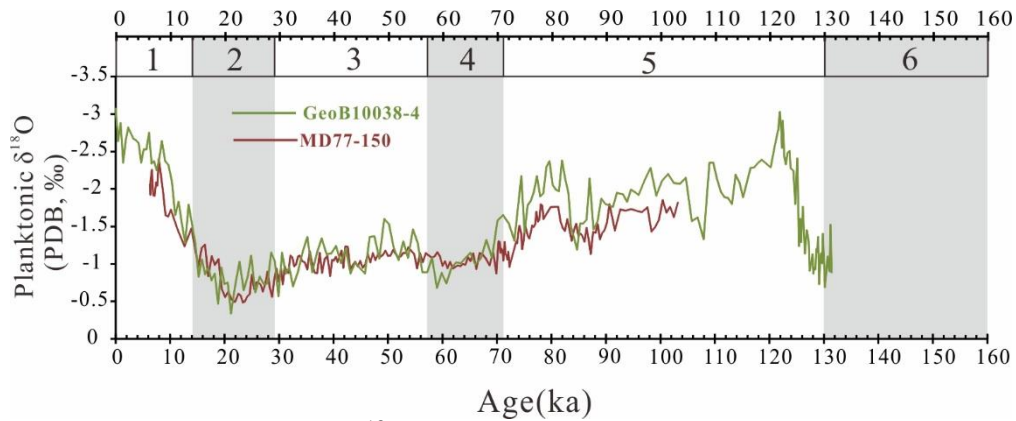


Figure S1. Comparison of the $\delta^{18}\text{O}$ stratigraphic framework of Core MD77-150 with the adjacent Core GeoB 10038-4 from the Mentawai-Basin off west Sumatra (Mohtadi et al., 2010). Gray shadings mark the MIS 2, 4 and 6.

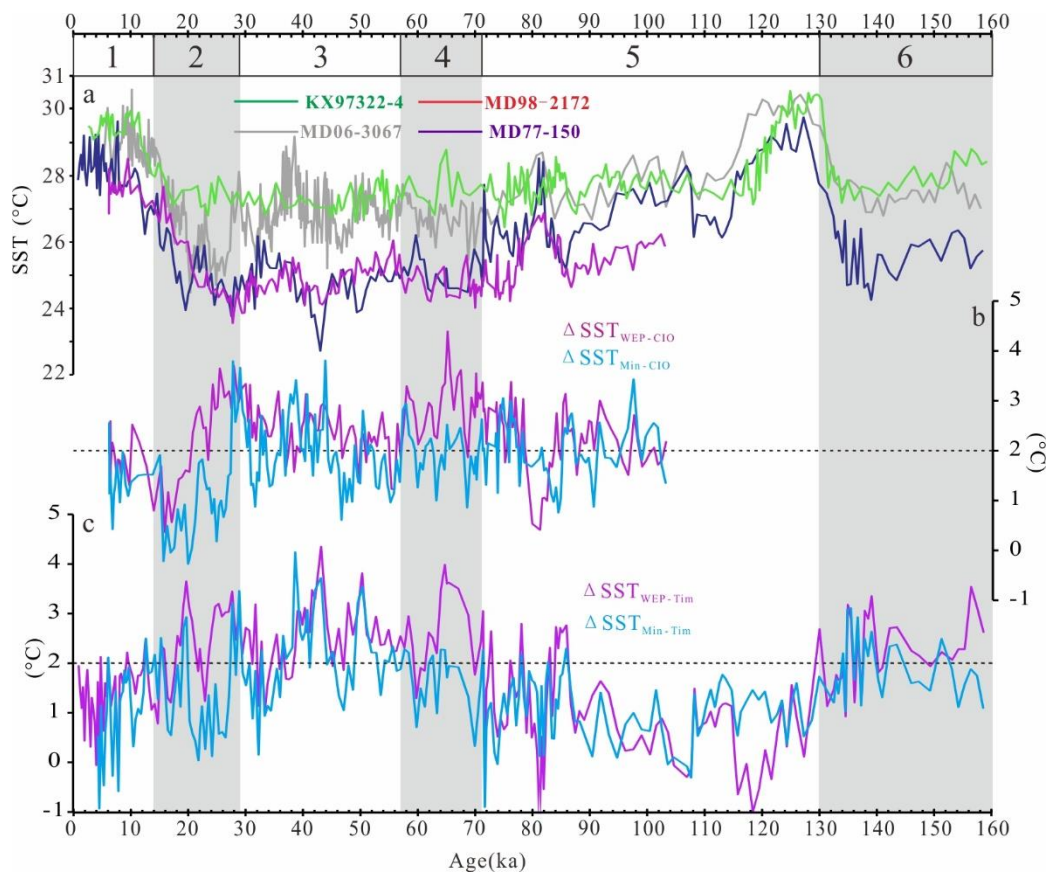


Figure S2. (a) Comparison of SSTs from cores MD98-2172, MD77-150, MD06-3067 (Bolliet et al., 2011) and KX97322-4 (Zhang et al., 2021); (b) $\Delta\text{SST}_{\text{WEP-CIO}}$ and $\Delta\text{SST}_{\text{Min-CIO}}$; (c) $\Delta\text{SST}_{\text{WEP-Tim}}$ and $\Delta\text{SST}_{\text{Min-Tim}}$. Gray shadings mark the MIS 2, 4 and 6.

References

- Mohtadi, M., Lückge, A., Steinke, S., Groeneveld, J., Hebbeln, D., & Westphal, N. (2010). Late Pleistocene surface and thermocline conditions of the eastern tropical Indian Ocean. *Quaternary Science Reviews* 29, 887–896, doi:10.1016/j.quascirev.2009.12.006
- Bolliet, T., Holbourn, A., Kuhnt, W., Laj, C., Kissel, C., Beaufort, L., Kienast, M., Andersen, N., & Garbe - Schönberg, D. (2011). Mindanao Dome variability over the last 160 kyr: Episodic glacial cooling of the West Pacific Warm Pool. *Paleoceanography*, 26, PA1208. doi:10.1029/2010PA001966
- Zhang, S., Yu, Z. F., Gong, X., Wang, Y., Chang, F. M., Lohmman, G., Qi, Y. Q., & Li, T. G. (2021). Precession cycles of the El Niño/South Oscillation-like system controlled by Pacific upper-ocean stratification. *Communications earth & environment*. <https://doi.org/10.1038/s43247-21-00305-5>