

---

## Non-lethal sampling method for the analysis of white muscle fatty acid profiles in European sea bass (*Dicentrarchus labrax*)

Péron Mickaël <sup>1,\*</sup>, Simon Victor <sup>3</sup>, Le Grand Fabienne <sup>2</sup>, Soudant Philippe <sup>2</sup>, Mazurais David <sup>3</sup>, Vagner Marie <sup>2</sup>

<sup>1</sup> Univ Brest, CNRS, IRD, Ifremer, LEMAR, F-29280, Plouzané, France

<sup>2</sup> Univ Brest, CNRS, IRD, Ifremer, LEMAR, F-29280, Plouzané, France

<sup>3</sup> Univ Brest, CNRS, IRD, Ifremer, LEMAR, F-29280, Plouzané, France

\* Corresponding author : Mickaël Péron, email address : [mickael.peron@univ-brest.fr](mailto:mickael.peron@univ-brest.fr)

---

### Abstract :

This study presents a novel non-lethal sampling method for assessing fatty acid (FA) composition in juvenile European sea bass (*Dicentrarchus labrax*) using subcutaneous white muscle biopsies. This research aimed to evaluate the suitability of the biopsy for FA analysis using two lipid extraction protocols and comparing them to a lethal routine method. The results showed that a mass of fresh tissue as low as 1.4 mg provided good quality FA chromatograms for both reserve and membrane lipids. Although the biopsy method displayed high variability in terms of FA quantity among intra-individual replicates, it showed good FA profile repeatability in both reserve and membrane lipids. The study highlights the potential of this non-lethal approach for studying FA dynamics in fish, with its application being particularly promising for ecological and experimental studies. However, careful biopsy implementation is recommended to account for potential lipid droplet and lipid distribution variability within the tissue.

**Keywords :** Fatty acids, European sea bass, Muscle biopsy, Lipid composition, Method comparison

## 1. Introduction

Lipids are essential molecules in animals that serve both as energy sources and reserves (non-polar lipids; NL), as well as key structural components of cell membranes (polar lipids; PL) (Sargent et al. 2003). Due to their structural function, lipids modulate cell membrane functionality and the function of membrane proteins (Singer and Nicolson 1972; Hulbert and Else 1999; Tocher 2003). They also modulate cellular signaling and communication (Murphy 1990), gene expression, and act as hormones or intracellular messengers (for reviews see Sargent et al. (2003) and Tocher (2003)). They then modulate various biological processes in cells, tissues, organs, that ultimately affect the overall performance of an individual (Tocher 2010). Both NL and PL are composed of fatty acids (FA), among which polyunsaturated fatty acids (PUFA) are the main component of cell membranes and thus play a key role in maintaining vital functions of most animals (Sargent et al. 2003). Among PUFA, eicosapentaenoic acid (20:5n-3, EPA) and docosahexaenoic acid (22:6n-3, DHA) have especially been demonstrated to be essential for most marine fish to ensure growth, reproduction, development (Tocher 2010). However, as for most animals, these FA are weakly synthesized *de novo* by fish, and must be obtained through the diet. In natural environments, EPA and DHA are primarily synthesized at the base of the aquatic food web by primary producers like marine microalgae (Arts and Kohler 2009) and then accumulate through the food chain, ultimately reaching higher consumers (Sargent et al. 1993; Tocher et al. 2006; Li et al. 2010).

Fish fatty acid composition analysis is mandatory to meet several objectives, for example, to understand the link between dietary FA and physiological performance of an individual. Experimental research has explored for instance the links between dietary FA, fish muscle membrane FA composition, and individual performances, such as growth, locomotion or metabolism (Tocher 2003; Calder 2012). The effects of dietary FA on fish physiology have also been studied in the context of global change, in combination with other environmental stressors like hypoxia (McKenzie et al. 2000, 2008), warming (Gourtay et al. 2018; Vagner et al. 2019) or acidification (Hurst et al. 2019). Examining fish FA composition is also valuable for understanding the structure of trophic food webs in natural ecosystems, as some fatty acids serve as trophic biomarkers that can be used to identify consumer prey and elucidate trophic interactions within an ecosystem (Dalsgaard et al. 2003; El-Sabaawi et al. 2010; Mathieu-Resuge et al. 2019; Bertrand et al. 2022).

Typically, in fish, FA analysis requires the sacrifice of the animal to obtain sufficient amount of tissue from specific organs (*e.g.*, 50-200 mg, wet weight WW, Meyer et al. (2017)) such as the liver, brain or muscle (Couturier et al. 2020; Betancor et al. 2021) to meet the minimal biomass requirements according to the analytical protocol. Also, while FA content of some tissues can provide an integrated record of dietary intake over a period of weeks to months, monitoring changes in a fish FA composition at shorter time scale and over time becomes challenging, which could otherwise offer valuable insights into the dynamics of FA incorporation. Blood could be considered as an interesting tissue to monitor FA composition over time, but as the recommended volume that can be drawn from a live fish is from 0.1 to 10% (Lawrence et al. 2020), this would lead to a maximum blood volume of 0.2 mL, which might be insufficient for FA analysis. However, this is only the case for small animals like juvenile fish and larger animals can be sampled without risking killing the individual.

Non-lethal sampling methods have already been used in fish biology to address trophic ecology and ecotoxicology, using fins and scales (Cano-Rocabayera et al. 2015; Jeffries et al. 2021) or blood (Lawrence et al. 2020). Non-lethal sampling of muscle has also been realized to study mercury concentrations, with a tissue WW ranging from

47 to 220 mg from fishes of a minimal size of 36 cm and 600 g (Baker et al. 2004). In 2013, Olsen et al. studied muscle FA composition using biopsy on adult salmon *Salmo salar* with a mean size and weight of 84 cm and 6.6 kg, respectively, and with biopsy samples weighing a minimum of 40 mg WW. However, one of the main challenges of these non-lethal sampling methods is the necessity to take a small quantity of sampled tissue to guarantee minimal harm to fish, especially when working with small species or young individuals (Meyer et al. 2017). Given that lipid distribution within a tissue can exhibit heterogeneity (Nanton et al. 2007; Barbosa et al. 2018) the small amount of tissue collected through biopsies may lead to an inaccurate representation of the tissue's lipid content. This could result in a lack of repeatability, as the variability in FA composition between replicates obtained from different areas of the same tissue is likely to be high.

The objective of our research was to evaluate a novel nonlethal sampling technique for determining the FA composition of juvenile European sea bass (*Dicentrarchus labrax*; Linnaeus 1758) using subcutaneous white muscle biopsies. We anticipate that this approach will: i) yield adequate tissue sample quantities for generating interpretable FA profiles ii) would be repeatable within an individual, with a low intra-individual variability, also compared to the inter-individual variability in terms of FA quantity and proportions, and iii) produce results comparable to a traditional but lethal method of sampling using higher tissue biomass. As working with dry samples is of interest in some particular cases, such as field studies, thanks to its convenience for transport and storage (Sardenne et al. 2019), we wanted to test whether the conditioning (freeze-drying or fresh) of biopsied tissues had an effect on FA quantities and proportions and could be compared to our routine tissue analysis.

## 2. Material and methods

### 2.1. Animal Ethics declaration

All fish manipulations were performed according to the Animal Care Committee of France (ACCF) and performed at the Ifremer facilities in Plouzané (France, Agreement number: B29-212-05). All fish manipulations were performed under anesthesia using tricaine (200 mg l<sup>-1</sup>, ethyl 3-aminobenzoate methane sulfonate), and all efforts were made to minimize animal suffering during manipulation.

### 2.2. Animal origin

Juvenile European sea bass originating from aquaculture farm have been raised from January 2020 to April 2021 in a single tank. They were maintained at the natural seasonal temperature of the bay of Brest (mean = 14.5 ± 2.8; min-max: 10-19°C) and were fed *ad-libitum* with a commercial diet thrice a week (NeoStart, Le Gouessant, Lamballe, France, Table S1).

### 2.3. Muscle sampling and lipid extraction

In April 2021, six individuals randomly chosen (15 ± 2 cm; 50 ± 10 g) were euthanized using tricaine (400 mg l<sup>-1</sup>) in seawater. On each individual, six subcutaneous white muscle biopsies were immediately performed on the left dorsal side of the fish, just behind the head, using a biopsy punch (2 mm LCH-PUK-20, Kai Medical, Solingen, Germany) (Fig. S1). Samples were visually checked to be sure that only white muscle was sampled.

Three out of the six biopsies (further named “Fresh”, 8.8 ± 1.0 mg WW) were directly dived into 6 mL of a mix of chloroform/methanol (2:1, v/v), following a modified method from (Folch et al. 1957) for lipid extraction. The three other biopsies (further named “FD” for Freeze-Dried, 9.5 ± 0.8 mg WW) were first flash frozen in liquid

nitrogen, and then freeze-dried for 36 hours before being dived into 6 mL of a mix of chloroform/ methanol (2:1, v/v).

After having performed biopsies, a large muscle sample (further named “MC” for Muscle control,  $80.0 \pm 24.4$  mg WW) was sampled on the same area as where biopsies were performed, in each individual (Fig. S1). MC were treated following our routine protocol for FA analyses. It was flash frozen, then grounded in liquid nitrogen into a homogenous powder and finally, 40 to 100 mg WW of muscle powder was dived in a 6 mL mix of chloroform/methanol (2:1, v/v). To ensure a total lipid extraction, all the lipid extracts (Fresh, FD, and MC) were sonicated for 10 min and agitated for 20 min before being stored at  $-20^{\circ}\text{C}$  under nitrogenous atmosphere prior further FA analysis.

#### 2.4. Analysis of the muscle fatty acid composition

##### 2.4.1. Lipid separation

For all samples, lipids were separated into non-polar lipids (NL) and polar lipids (PL) fractions following the method described by Le Grand et al. (2014). An aliquot (one sixth) of the total lipid extract was used for Muscle control samples, whereas the whole lipid extract was used for biopsies (both Fresh and FD), as the mass of biopsy sampled tissue ranged from 1.4 to 14.4 mg for Fresh and from 5.5 to 13.6 mg for FD samples. The lipid extract aliquot was evaporated to dryness under nitrogen, recovered with three washings of 0.5 mL of chloroform/methanol (98:2, v/v), and deposited at the top of a silica gel column (40 mm  $\times$  4 mm, silica gel 60 A 63–200  $\mu\text{m}$  rehydrated with 6%  $\text{H}_2\text{O}$  (70–230 mesh)). NL were eluted with 10 mL of chloroform/methanol (98:2, v/v) and collected in a glass vial containing 2.3  $\mu\text{g}$  of internal standard (tricosanoic acid, C23:0). PL were then eluted with 20 mL of methanol and collected in the same way as NL.

##### 2.4.2. Non-polar lipid and polar lipid transesterification

NL and PL fractions were processed following a modified version of Mathieu-Resuge et al. (2019). Briefly, NL and PL fractions were evaporated to dryness under nitrogen. Fatty Acid Methyl Esters (FAME) were then formed by adding 800  $\mu\text{L}$  of  $\text{H}_2\text{SO}_4$ /methanol (3.4%, v/v) and heating at  $100^{\circ}\text{C}$  for 10 min in a dry bath. After cooling, 800  $\mu\text{L}$  of hexane and 1.5 mL of hexane-saturated distilled water were added to the mixture. After removal of the aqueous phase, the hexane phase, containing FAME, was washed two more times with hexane-saturated distilled water.

##### 2.4.3. FAME analysis

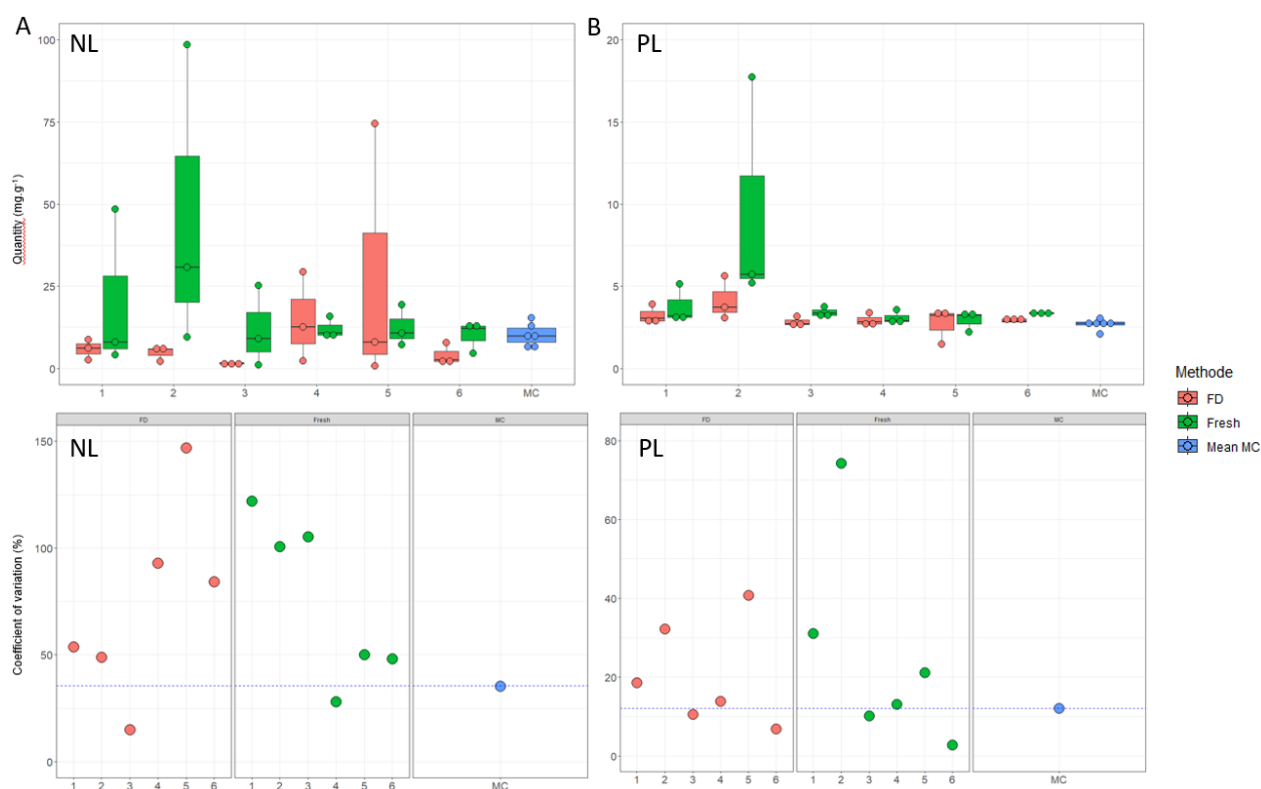
Analyses of FAME was performed on a Varian CP8400 gas chromatograph using simultaneously two separations on a polar column (DBWAX: 30 mm  $\times$  0.25 mm ID  $\times$  0.2  $\mu\text{m}$ , Agilent) and an apolar column (DB5: 30 m  $\times$  0.25 mm ID  $\times$  0.2  $\mu\text{m}$ , Agilent) using hydrogen as carrier gas with a flow rate set at 2 mL.min<sup>-1</sup>, in splitless mode. The oven temperature was programmed as follows: first, initial heating from  $60^{\circ}\text{C}$  to  $150^{\circ}\text{C}$  at 50  $^{\circ}\text{C}.\text{min}^{-1}$ , then to  $170^{\circ}\text{C}$  at 3.5  $^{\circ}\text{C}.\text{min}^{-1}$ , to  $185^{\circ}\text{C}$  at 1.5  $^{\circ}\text{C}.\text{min}^{-1}$ , to 225 at 2.4  $^{\circ}\text{C}.\text{min}^{-1}$  and finally to  $250^{\circ}\text{C}$  at 5.5  $^{\circ}\text{C}.\text{min}^{-1}$  and maintained for 25 min. Injector temperature was set at  $250^{\circ}\text{C}$ , detector temperature at  $280^{\circ}\text{C}$ . Identification of FAME was realized by comparison of their retention time based on those of commercial standards (Supelco 37 Component FAME Mix, PUFA No.1 and No.3, and Bacterial Acid Methyl Ester Mix, Sigma, MO, USA). Internal standard allowed to calculate FA content ( $\mu\text{g}.\text{mg}^{-1}$  WW). Fatty acid proportion was defined as the mass percentage of each fatty acid to the total fatty acid content.

## 2.5. Statistical analysis

All statistical analyses were conducted using R Studio (v4.2.1). In order to determine if the biopsy method would be spatially repeatable within one individual, we calculated the intra-individual variation as the CV (standard deviation/mean) of the studied parameter (FA quantities and proportion), for each individual and for each biopsy method (n=3 Fresh and n=3 FD for each individual). This was performed on both quantity and proportions of EPA, DHA, PUFA, monounsaturated fatty acid (MUFA) and saturated fatty acid (SFA) in both NL and PL fractions. In order to be able to characterize the range of intra-individual variability, we compared these intra-individual CV to the corresponding inter-individual CV performed on MC samples (n=6).

We hypothesized that if the intra-individual CV exceeded either 10% (Sardenne et al. 2019) or the corresponding inter-individual CV, the biopsy method would not be repeatable enough to be validated and used with confidence. On the contrary, if the intra-individual variability was lower than 10% or than the inter-individual variability, we hypothesized that the biopsy method would be repeatable. It is the necessary condition allowing us to calculate the mean of the biopsy triplicates and to conduct a PERMANOVA test to compare the effect of the method (Fresh, FD, MC) on the FA proportions. We used the PERMANOVA to test the general profile of FA with “Method” (i.e. Fresh, Freeze-dried, and Control), as a factor and each method was set as fixed level. Only the ten main FA were considered in this analysis. To evaluate if there were any differences in specific FA proportions between the methods, each FA was analyzed using a one-way ANOVA test. Normality and homoscedasticity were assessed on residuals with the Shapiro-Wilk and Bartlett tests, respectively. If ANOVA assumptions were not met, a Kruskal-Wallis test was employed on not-transformed data (Hecke 2012). When ANOVA or Kruskal-Wallis tests indicated significant differences, a post-hoc Tukey HSD test was conducted to differentiate the conditions. Data are presented as mean  $\pm$  SEM.

## 3. Results

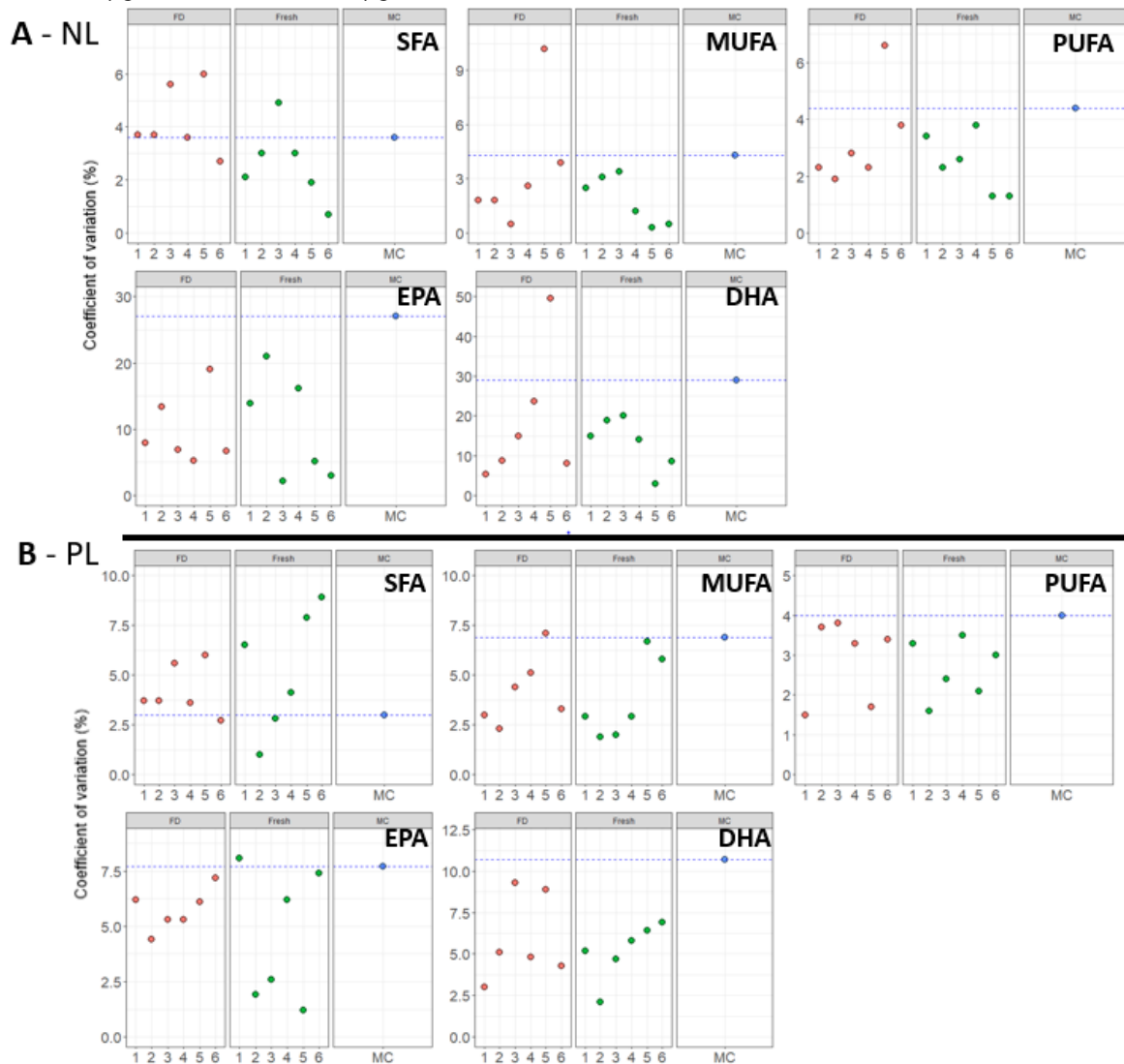


**Fig. 1: Fatty acid quantities (mg.g<sup>-1</sup> WW upper panels) and coefficients of variation (percentage, lower panels) of FA quantities in non-polar lipids (A, C) and polar lipids (B, D) of different method.** The different methods are presented as followed: Freeze-dried protocol (FD, red, n=3 intra-individual replicates), fresh protocol (Fresh, green, n=3 intra-individual replicates) and muscle control (MC, blue, n=6 inter-individual replicates) in white muscle of juvenile European sea bass, *Dicentrarchus labrax*. On the boxplots, each dot represent a replicate. On the dot plot, each dot represent the CV of the 3 (for biopsies) or 6 replicates (for MC) and the blue dotted line represent the value of MC CV.

### 3.1. Adequacy of biopsied tissues for FA analysis.

White muscle biopsy samples ranging from 1.5 to 14.4 mg were sufficient to obtain good quality chromatograms. In addition, the biopsy method allowed us to quantify over 90% of the FA identified in the Muscle control method. The biopsy total lipid extracts contained  $86.1 \pm 13.5 \mu\text{g}$  (min-max: 5.5-409.0  $\mu\text{g}$ ) of FA for NL and  $28.8 \pm 1.7 \mu\text{g}$  (min-max: 10.8-45.6  $\mu\text{g}$ ) of FA for PL (not shown). These values were similar to those contained in the 1/6 aliquots

of MC total lipid extracts used in the routine method:  $86.1 \pm 13.5 \mu\text{g}$  (min-max: 5.5-409.0  $\mu\text{g}$ ) of FA for NL and  $28.8 \pm 1.7 \mu\text{g}$  (min-max: 10.8-45.6  $\mu\text{g}$ ) of FA for PL (not shown).



**Fig. 2: Coefficient of variation (percentage) of FA proportions in NL (A) and PL (B) for the different methods.** Main family and FA are presented: Saturated fatty acids (SFA), monounsaturated fatty acids (MUFA), polyunsaturated fatty acids (PUFA), eicosapentaenoic acid (EPA) and docosahexaenoic acid (DHA) for freeze-dried protocol (FD, red, n=3 intra-individual replicates), fresh protocol (Fresh, green, n=3 intra-individual replicates) and muscle control (MC, blue, n=6, inter-individual replicates) in white muscle of juvenile European sea bass, *Dicentrarchus labrax*. Each dot represent the CV of the 3 (for biopsies) or 6 replicates (for MC) and the blue dotted line represent the value of MC CV.

### 3.2. Repeatability of the biopsy method within an individual

Our results indicate that both biopsy methods resulted in high intra-individual variability in total FA quantity in NL (Fig. 1 NL A) (Fresh: min-max: 1.0-98.4  $\text{mg}\cdot\text{g}^{-1}$ , FD: min-max: 0.7-74.4  $\text{mg}\cdot\text{g}^{-1}$ ) this variability, illustrated by the coefficient of variation of the three replicates per individual and biopsy method (CV mean =  $75 \pm 40\%$ , min-max = 15-147%) was always above 10% (Fig. 1C). The CV values were higher than those of MC for 5 out of 6 individuals for both methods. In PL, the intra-individual variability of total FA quantity was lower than in NL (Fig. 1B) but still displayed considerable differences between extreme values (Fresh: min-max: 2.2-17.7  $\text{mg}\cdot\text{g}^{-1}$ , FD:

min-max: 1.4-5.6 mg.g<sup>-1</sup>). The CV was higher than 10% for most individuals and ranged from 3% to 74% for both Fresh and FD methods (CV mean = 23 ± 19.8%, Fig. 1D). The CV values were higher than those of MC for 4 out of 6 individuals for both methods. In general, no biopsy method distinguished itself from the other in terms of variability.

Regarding the NL fraction, SFA, MUFA and PUFA proportions (Fig. 2A) varied less within individuals (CV <10%), than EPA and DHA (Fig. 2A, E-F, EPA min-max: 3-21.1%; DHA min-max: 2.9-49.6%), whatever the sampling method employed, either biopsy or routine. For EPA, the biopsy CV was always lower than the MC CV. For DHA, 11 out of 12 CV were lower than the MC CV. Regarding PL, even if the CV varied among individuals, they remained under 10% for all individuals and for both methods (Fig. 2B).

### 3.3. Comparison between biopsy methods and a traditional but lethal method of sampling

Concerning FA quantities, the biopsy results showed a high intra-individual variability for both methods. We then considered that biopsy replicates would not be repeatable enough and then could not be pooled to obtain a mean per individual, and thus, that testing the effect of method on FA quantities would not be relevant.

Regarding biopsy methods, most of the FA proportions in NL and PL had a CV <10% and had lower CV than the inter-individual one (Fig. 2). We thus hypothesized that the biopsy triplicates performed within individuals could be pooled, and that the effect of method can be tested on FA proportions. When considering the 10 major fatty acids (Fig. S2), no significant effect of the method was observed for both NL and PL (PERMANOVA,  $p > 0.05$ ). However, when considering the FA individually, 16:0 and 18:0 FA exhibited a significantly higher proportion in the NL fraction when analyzed with the FD method than with the two others (Table 1), and consequently, SFA proportions followed this trend. No statistical differences were observed among the three methods for PL FA proportions (Table 1).

**Table 1: Fatty acid proportion (mass percentage of each FA over total fatty acids) of the 10 major fatty acids measured in non-polar (NL) and polar (PL) lipids with the three methods: Fresh biopsy, freeze-dried biopsy (FD) and muscle control (MC) in white muscle of juvenile European sea bass, *Dicentrarchus labrax*.** Data are presented as inter-individual means (± SEM, n=6), after pooling intra-individual biopsy triplicates. The effect of the method on the FA proportions was tested using a one-way ANOVA or Kruskal-Wallis test, followed by Tukey's post hoc test or pairwise Wilcoxon test. Significance was accepted at  $p < 0.05$ . Different letters read in line indicate significant differences between methods. \*\*\*  $p < 0.001$ , \*\*  $p < 0.01$ , \*  $p < 0.05$ , - NS (not significant). SFA: saturated fatty acids; MUFA: monounsaturated fatty acids; PUFA: polyunsaturated fatty acids.

NL Fatty Acid	Muscle Biopsies		Muscle Control	Statistics
	Fresh	Freeze-Dried		
14:0	2.9 ± 0.2	3.1 ± 0.2	3.1 ± 0.2	-
16:0	18.1 ± 0.3 <sup>a</sup>	18.2 ± 0.1 <sup>a</sup>	18.2 ± 0.1 <sup>a</sup>	**
18:0	3.7 ± 0.2 <sup>a</sup>	3.6 ± 0.1 <sup>a</sup>	3.6 ± 0.1 <sup>a</sup>	**
16:1n-7	5.7 ± 0.3	5.9 ± 0.3	5.9 ± 0.3	-
18:1n-7	3.0 ± 0.1	3.1 ± 0.1	3.1 ± 0.1	-
18:1n-9	29.0 ± 1.5	28.8 ± 1.2	28.8 ± 1.2	-



18:2n-6	13.4 ± 1.1	13.1 ± 0.7	13.1 ± 0.7	-
18:3n-3	2.5 ± 0.2	2.4 ± 0.1	2.4 ± 0.1	-
20:5n-3	5.5 ± 0.7	5.5 ± 0.6	5.5 ± 0.6	-
22:6n-3	2.8 ± 0.4	2.8 ± 0.3	2.8 ± 0.3	-
SFA	25.6 ± 0.6 <sup>a</sup>	26.0 ± 0.3 <sup>a</sup>	26.0 ± 0.3 <sup>a</sup>	**
MUFA	42.8 ± 0.9	43.1 ± 0.8	43.1 ± 0.8	-
PUFA	31.3 ± 0.5	30.7 ± 0.5	30.7 ± 0.5	-
<b>PL Fatty Acid</b>	<b>Muscle Biopsies</b>			<b>Statistics</b>
	<b>Fresh</b>	<b>Freeze-Dried</b>	<b>Muscle control</b>	
16:0	23.2 ± 0.3	23.7 ± 0.5	22.6 ± 0.3	-
18:0	5.9 ± 0.1	5.8 ± 0.1	6.1 ± 0.2	-
16:1n-7	2.5 ± 0.1	2.4 ± 0.1	2.7 ± 0.2	-
18:1n-7	2.1 ± 0.0	2.1 ± 0.0	2.1 ± 0.1	-
18:1n-9	13.1 ± 0.4	13.6 ± 0.4	14.0 ± 0.5	-
18:2n-6	5.8 ± 0.4	5.9 ± 0.4	6.2 ± 0.4	-
20:4n-6	1.7 ± 0.0	1.7 ± 0.0	1.7 ± 0.1	-
20:5n-3	14.7 ± 0.2	14.5 ± 0.2	14.2 ± 0.4	-
22:5n-3	2.4 ± 0.1	2.2 ± 0.2	2.3 ± 0.1	-
22:6n-3	17.0 ± 0.5	16.8 ± 0.5	16.3 ± 0.7	-
SFA	31.1 ± 0.4	31.5 ± 0.5	30.6 ± 0.4	-
MUFA	19.8 ± 0.5	20.2 ± 0.5	21.1 ± 0.6	-
PUFA	46.8 ± 0.5	46.2 ± 0.5	45.8 ± 0.7	-

#### 4. Discussion

##### 4.1. Adequacy of biopsied tissue for FA analysis

Our results show that white muscle biopsy using punch of 2 mm on sea bass juvenile of about 15 cm and 50 g is adequate to perform fatty acid analysis. The sampled biopsied tissues were sufficient to yield at least 5.5 µg of FA for NL and 10.8 µg for PL, which was enough to obtain qualitative chromatograms with FA having a peak area reaching the minimal threshold. The average FA quantity extracted was even much higher than these minimums, which supports that white muscle biopsy method provides an adequate quantity of tissue for FA analysis. Olsen et al. (2013) stated that 5 µg of FA is the minimum amount required to obtain interpretable chromatograms. In the same study, the authors suggested to use a minimum of 60 mg WW of muscle but this value should consider the type of tissue, life stage of the fish, the species, as well as the analytical equipment used. The fish size and weight are crucial considerations when sampling tissue to ensure minimal impact on the animal. In our study, we did not tested the effect of biopsy on fish growth and health condition, as they were sacrificed. But in a related study, Quéméneur et al. (2022) conducted red muscle biopsies on European sea bass of a similar size (around 76.7g in weight) using the same biopsy punch as ours. They observed that the biopsy did not affect the fish's immune system, and the fish continued to gain weight post-procedure. Henderson et al. (2016) used a larger biopsy punch (4mm compared to our 2mm) on Moses perch *Lutjanus russelli* and Grass emperor *Lethrinus laticaudis*. These fish had a total length close to those used in our study (approximately 15.8 and 14.0 cm, respectively), and it was found that the biopsy procedure led to only temporary stress and did not result in any fish mortality.

#### 4.2. How repeatable is the FA analysis within an individual using the biopsy method?

Quantities of FA obtained with the biopsy methods were highly variable within individuals for both NL (almost 100-time fold between min and max) and PL (almost 5-time fold between min and max). One hypothesis could be that these variations might be caused by the presence of lipid droplets in the tissue. Lipid droplets are intracellular structures mainly composed of NL, serving as lipid storage in various tissues, including muscle (Favé et al. 2004; Kiessling et al. 2006; Granneman et al. 2017) that would hence induce higher FA content variability in NL rather than in PL. However, lipid droplets are less abundant in fish white muscle compared to red muscle (Kiessling et al. 2006; Granneman et al. 2017) and may only be present in few samples, leading to FA quantities significantly higher in samples containing lipid droplets. In addition, the distribution of lipids in white muscle is known to vary depending on the sampling location (Charette et al. 2021) which may cause FA quantities to differ based on the sampling location of the biopsy.

#### 4.3. Comparison between methods and traditional lethal sampling

Contrary to quantities, the analysis of FA proportions using biopsy was repeatable. The low variability for SFA, MUFA, and PUFA proportions in NL measured within individuals (CV<10%) suggests relative homogeneity of these proportions within individuals, while higher variability in EPA and DHA proportions could indicate dietary or metabolic impacts leading to specific heterogeneity in FA profile. Is the biopsy method comparable to a traditional but lethal method.

For NL, the variability measured within individuals and illustrated by the high CV values that exceeded the targeted 10% threshold as well as the inter-individual variability (Sardenne et al. 2019), makes it difficult to compare the two-biopsy methods with the control methods. A higher quantity of tissue would have supported less variability between methods, as shown by Sardenne et al. (2019) who compared the effect of extraction method from wet and dry muscle tissue (around 100 mg) from gilthead seabream *Sparus aurata* and did not find any differences between methods when considering total lipids (NL + PL).

In terms of proportions, the biopsy method seemed to yield results comparable to the MC for both extraction protocols. As the intra-individual variability did not reach the threshold of our study, we considered the biopsy method repeatable and comparable for both extraction protocols. Indeed, no differences between biopsy and control methods were observed when considering the whole profile of 10 major FA for NL and PL. However, differences were observed when considering individually certain SFA (16:0 and 18:0) for the FD method despite being repeatable with our criteria. Nevertheless, we acknowledge that applying a uniform threshold to both proportions and quantities may not be wholly pertinent, as it involves two distinct aspects. It might be necessary to calibrate this threshold more appropriately, depending on whether we are investigating proportions or quantities due to their different nature and analytical variabilities.

### 5. Conclusions

This study assessed the feasibility of a novel approach for measuring FA composition in European sea bass using subcutaneous white muscle biopsies. The method allowed successfully obtaining adequate sample biomass and produced high-quality chromatograms for both analytical protocols. FA quantity obtained with both biopsy methods was highly variable within individuals, potentially due to factors such as lipid droplets and heterogeneous

lipid distribution in the sampled tissue. We thus recommend to take a special care when realizing the biopsy, and to ensure that a sufficiently deep piece of tissue is removed, avoiding the muscle directly in contact with the skin which has different FA composition. The analysis of FA proportions appeared to be achievable with biopsy with both protocols. Although it is challenging to determine the optimal biopsy method for FA analysis in fish, this study demonstrates the potential of using subcutaneous white muscle biopsies in European sea bass for examining FA composition, with a particular focus on FA proportions. The fish species, its fat content and its size must also be considered to optimize lipid extraction and minimize the effect of the procedure on the animal.

## 6. Acknowledgments

We thank Fany Sardenne for her help and suggestion on previous versions of the manuscript. We thank the two anonymous reviewers for their comments on the manuscript.

## 7. Competing interests

The authors declare that they have no known competing financial interests that could have appeared to influence the work reported in this paper. We hereby disclose that Dr. David Mazurais, a contributing author of this article, also serves as an Editor on Fish Physiology and Biochemistry board, and affirm that all review and acceptance processes for this publication were conducted impartially and without bias

## Declarations

## Ethical Approval

All fish manipulations were performed according to the Animal Care Committee of France (ACCF) and performed at the Ifremer facilities in Plouzané (France, Agreement number: B29-212-05). All fish manipulations were performed under anesthesia using tricaine (200 mg l<sup>-1</sup>, ethyl 3-aminobenzoate methane sulfonate), and all efforts were made to minimize animal suffering during manipulation.

## Funding

This work was supported by the Brittany region to Marie Vagner.

## Availability of data and materials

All data will be made available on request.

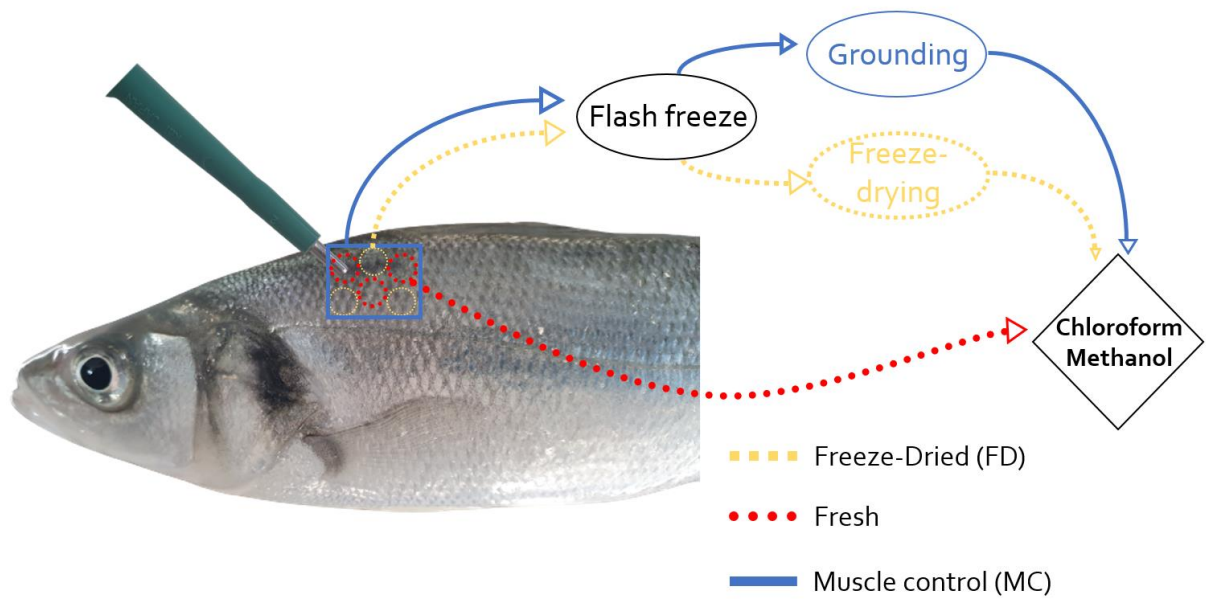
## 8. References

- Arts MT, Kohler CC (2009) Health and condition in fish: the influence of lipids on membrane competency and immune response. In: Kainz M, Brett MT, Arts MT (eds) *Lipids in Aquatic Ecosystems*. Springer, New York, NY, pp 237–256
- Baker RF, Blanchfield PJ, Paterson MJ, et al (2004) Evaluation of Nonlethal Methods for the Analysis of Mercury in Fish Tissue. *Trans Am Fish Soc* 133:568–576. <https://doi.org/10.1577/T03-012.1>
- Barbosa RG, Trigo M, Prego R, et al (2018) The chemical composition of different edible locations (central and edge muscles) of flat fish (*Lepidorhombus whiffiagonis*). *Int J Food Sci Technol* 53:271–281. <https://doi.org/10.1111/ijfs.13583>

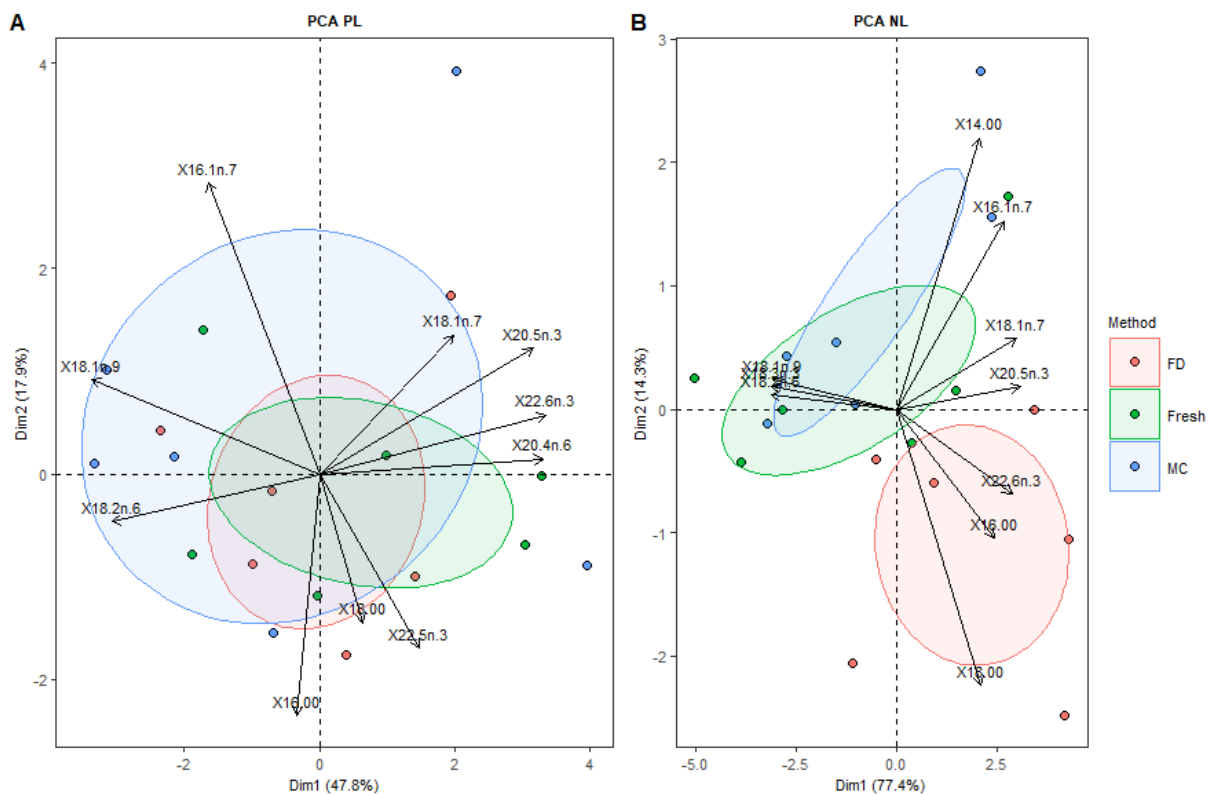
- Bertrand M, Brosset P, Soudant P, Lebigre C (2022) Spatial and ontogenetic variations in sardine feeding conditions in the Bay of Biscay through fatty acid composition. *Mar Environ Res* 173:105514. <https://doi.org/10.1016/j.marenvres.2021.105514>
- Betancor MB, MacEwan A, Sprague M, et al (2021) Oil from transgenic *Camelina sativa* as a source of EPA and DHA in feed for European sea bass (*Dicentrarchus labrax* L.). *Aquaculture* 530:735759. <https://doi.org/10.1016/j.aquaculture.2020.735759>
- Calder PC (2012) Mechanisms of Action of (n-3) Fatty Acids. *J Nutr* 142:592S-599S. <https://doi.org/10.3945/jn.111.155259>
- Cano-Rocabayera O, Maceda-Veiga A, de Sostoa A (2015) Fish fins and scales as non-lethally sampled tissues for stable isotope analysis in five fish species of north – eastern Spain. *Environ Biol Fishes* 98:925–932. <https://doi.org/10.1007/s10641-014-0328-6>
- Charette T, Rosabal M, Amyot M (2021) Mapping metal (Hg, As, Se), lipid and protein levels within fish muscular system in two fish species (Striped Bass and Northern Pike). *Chemosphere* 265:129036. <https://doi.org/10.1016/j.chemosphere.2020.129036>
- Couturier LIE, Michel LN, Amaro T, et al (2020) State of art and best practices for fatty acid analysis in aquatic sciences. *ICES J Mar Sci* 77:2375–2395. <https://doi.org/10.1093/icesjms/fsaa121>
- Dalsgaard J, St. John M, Kattner G, et al (2003) Fatty acid trophic markers in the pelagic marine environment. In: *Advances in Marine Biology*. Academic Press, pp 225–340
- El-Sabaawi RW, Sastri AR, Dower JF, Mazumder A (2010) Deciphering the Seasonal Cycle of Copepod Trophic Dynamics in the Strait of Georgia, Canada, Using Stable Isotopes and Fatty Acids. *Estuaries Coasts* 33:738–752. <https://doi.org/10.1007/s12237-009-9263-8>
- Favé G, Coste T, Armand M (2004) Physicochemical properties of lipids: New strategies to manage fatty acid bioavailability. *Cell Mol Biol Noisy--Gd Fr* 50:815–31
- Folch J, Lees M, Sloane Stanley GH (1957) A simple method for the isolation and purification of total lipides from animal tissues. *J Biol Chem* 226:497–509
- Gourtay C, Chabot D, Audet C, et al (2018) Will global warming affect the functional need for essential fatty acids in juvenile sea bass (*Dicentrarchus labrax*)? A first overview of the consequences of lower availability of nutritional fatty acids on growth performance. *Mar Biol* 165:143. <https://doi.org/10.1007/s00227-018-3402-3>
- Granneman JG, Kimler VA, Zhang H, et al (2017) Lipid droplet biology and evolution illuminated by the characterization of a novel perilipin in teleost fish. *eLife* 6:e21771. <https://doi.org/10.7554/eLife.21771>
- Hecke TV (2012) Power study of anova versus Kruskal-Wallis test. *J Stat Manag Syst* 15:241–247. <https://doi.org/10.1080/09720510.2012.10701623>
- Henderson CJ, Stevens TF, Lee SY (2016) Assessing the suitability of a non-lethal biopsy punch for sampling fish muscle tissue. *Fish Physiol Biochem* 42:1521–1526. <https://doi.org/10.1007/s10695-016-0237-z>
- Hulbert AJ, Else PL (1999) Membranes as Possible Pacemakers of Metabolism. *J Theor Biol* 199:257–274. <https://doi.org/10.1006/jtbi.1999.0955>
- Hurst TP, Copeman LA, Haines SA, et al (2019) Elevated CO<sub>2</sub> alters behavior, growth, and lipid composition of Pacific cod larvae. *Mar Environ Res* 145:52–65. <https://doi.org/10.1016/j.marenvres.2019.02.004>
- Jeffries KM, Teffer A, Michaleski S, et al (2021) The use of non-lethal sampling for transcriptomics to assess the physiological status of wild fishes. *Comp Biochem Physiol B Biochem Mol Biol* 256:110629. <https://doi.org/10.1016/j.cbpb.2021.110629>
- Kiessling A, Ruohonen K, Bjørnevik M (2006) Muscle fibre growth and quality in fish

- Lawrence MJ, Raby GD, Teffer AK, et al (2020) Best practices for non-lethal blood sampling of fish via the caudal vasculature. *J Fish Biol* 97:4–15. <https://doi.org/10.1111/jfb.14339>
- Le Grand F, Soudant P, Siah A, et al (2014) Disseminated Neoplasia in the Soft-Shell Clam *Mya arenaria*: Membrane Lipid Composition and Functional Parameters of Circulating Cells. *Lipids* 49:807–818. <https://doi.org/10.1007/s11745-014-3917-4>
- Li Y, Han D, Hu G, et al (2010) Inhibition of starch synthesis results in overproduction of lipids in *Chlamydomonas reinhardtii*. *Biotechnol Bioeng* 107:258–268. <https://doi.org/10.1002/bit.22807>
- Mathieu-Resuge M, Kraffe E, Le Grand F, et al (2019) Trophic ecology of suspension-feeding bivalves inhabiting a north-eastern Pacific coastal lagoon: Comparison of different biomarkers. *Mar Environ Res* 145:155–163. <https://doi.org/10.1016/j.marenvres.2019.02.016>
- McKenzie DJ, Lund I, Pedersen PB (2008) Essential fatty acids influence metabolic rate and tolerance of hypoxia in Dover sole (*Solea solea*) larvae and juveniles. *Mar Biol* 154:1041–1051. <https://doi.org/10.1007/s00227-008-0998-8>
- McKenzie DJ, Piraccini G, Piccolella M, et al (2000) Effects of dietary fatty acid composition on metabolic rate and responses to hypoxia in the European eel (*Anguilla anguilla*). *Fish Physiol Biochem* 22:281–296. <https://doi.org/10.1023/A:1007865327923>
- Meyer L, Pethybridge H, Nichols PD, et al (2017) Assessing the Functional Limitations of Lipids and Fatty Acids for Diet Determination: The Importance of Tissue Type, Quantity, and Quality. *Front Mar Sci* 4:
- Murphy MG (1990) Dietary Fatty Acids and Membrane Protein Function. *J Nutr Biochem* 1:68–79. [https://doi.org/10.1016/0955-2863\(90\)90052-M](https://doi.org/10.1016/0955-2863(90)90052-M)
- Nanton DA, Vegusdal A, Rørå AMB, et al (2007) Muscle lipid storage pattern, composition, and adipocyte distribution in different parts of Atlantic salmon (*Salmo salar*) fed fish oil and vegetable oil. *Aquaculture* 265:230–243. <https://doi.org/10.1016/j.aquaculture.2006.03.053>
- Olsen RE, Taranger GL, Svåsand T, Skilbrei OT (2013) Improved method for triacylglycerol-derived fatty acid profiling by various non-lethal and lethal sampling techniques in Atlantic salmon. *Aquac Environ Interact* 4:251–261. <https://doi.org/10.3354/aei00087>
- Quéméneur J-B, Danion M, Cabon J, et al (2022) The relationships between growth rate and mitochondrial metabolism varies over time. *Sci Rep* 12:16066. <https://doi.org/10.1038/s41598-022-20428-9>
- Sardenne F, Bodin N, Metral L, et al (2019) Effects of extraction method and storage of dry tissue on marine lipids and fatty acids. *Anal Chim Acta* 1051:82–93. <https://doi.org/10.1016/j.aca.2018.11.012>
- Sargent J r., Bell J g., Bell M v., et al (1993) The Metabolism of Phospholipids and Polyunsaturated Fatty Acids in Fish. In: *Aquaculture: Fundamental and Applied Research*. American Geophysical Union (AGU), pp 103–124
- Sargent JR, Tocher DR, Bell JG (2003) 4 - The Lipids. In: Halver JE, Hardy RW (eds) *Fish Nutrition* (Third Edition). Academic Press, San Diego, pp 181–257
- Singer SJ, Nicolson GL (1972) The Fluid Mosaic Model of the Structure of Cell Membranes | Science
- Tocher DR (2003) Metabolism and Functions of Lipids and Fatty Acids in Teleost Fish. *Rev Fish Sci* 11:107–184. <https://doi.org/10.1080/713610925>
- Tocher DR (2010) Fatty acid requirements in ontogeny of marine and freshwater fish. *Aquac Res* 41:717–732. <https://doi.org/10.1111/j.1365-2109.2008.02150.x>
- Tocher DR, Zheng X, Schleichriem C, et al (2006) Highly unsaturated fatty acid synthesis in marine fish: Cloning, functional characterization, and nutritional regulation of fatty acyl  $\Delta 6$  desaturase of Atlantic cod (*Gadus morhua* L.). *Lipids* 41:1003–1016. <https://doi.org/10.1007/s11745-006-5051-4>

Vagner M, Pante E, Viricel A, et al (2019) Ocean warming combined with lower omega-3 nutritional availability impairs the cardio-respiratory function of a marine fish. *J Exp Biol* 222:jeb187179.  
<https://doi.org/10.1242/jeb.187179>



**Fig. S1: Sampling protocol performed on six individuals of European seabass (*Dicentrarchus labrax*).** Biopsies are represented by the circles ( $n=6$  biopsies per individual). Fresh method is represented by the red dotted line ( $n=3$  per individual, dived directly in chloroform/methanol (2:1, v/v)). Freeze-dried method is represented by the yellow dotted line ( $n=3$  per individual, flash frozen then freeze-dried and dived into chloroform/methanol (2:1, v/v)). On all individuals, the rest of the muscle tissue was sampled and is represented by the blue solid line (flash frozen then grounded in liquid nitrogen and dived in chloroform/methanol (2:1, v/v)).



**Fig. S2: Principal Component Analysis (PCA) of the ten most abundant fatty acids (FA) for polar lipids (PL, A) and neutral lipids (NL, B) for the different methods.** Red dots represent a pooled biopsy triplicate for the Freeze-dried method ( $n=6$ ). Green dots represent a pooled biopsy triplicate for the Fresh method ( $n=6$ ). Blue dots represent the Muscle Control (MC) method ( $n=6$ ). All ellipses represent confidence ellipses.

**Table S1: Fatty acid composition of the diet.** Values are expressed as percentage of total FA. Data are presented as mean  $\pm$  SD (n=3). SFA: Saturated Fatty Acid, MUFA: Monounsaturated fatty acid, PUFA: Polyunsaturated fatty acid.

FA	Mean $\pm$ sd
14 :0	8.31 $\pm$ 0.23
16 :0	23.06 $\pm$ 0.17
18 :0	4.60 $\pm$ 0.02
$\Sigma$ SFA	37.93 $\pm$ 0.38
16 :1n-7	9.50 $\pm$ 0.11
18 :1n-7	3.85 $\pm$ 0.03
18 :1n-9	13.05 $\pm$ 0.08
20 :1n-9	3.36 $\pm$ 0.09
22 :1n-11	3.78 $\pm$ 0.07
$\Sigma$ MUFA	36.21 $\pm$ 0.21
16 :4n-1	1.42 $\pm$ 0.01
18 :2n-6	4.84 $\pm$ 0.04
18 :4n-3	1.26 $\pm$ 0.01
20 :4n-6	0.59 $\pm$ 0.00
20 :5n-3	7.49 $\pm$ 0.06
22 :6n-3	3.04 $\pm$ 0.05
$\Sigma$ PUFA	25.50 $\pm$ 0.18
$\Sigma$ n-6	6.17 $\pm$ 0.07
$\Sigma$ n-3	14.74 $\pm$ 0.12



**Figure S3: Picture of the piece of muscle removed after the biopsy**