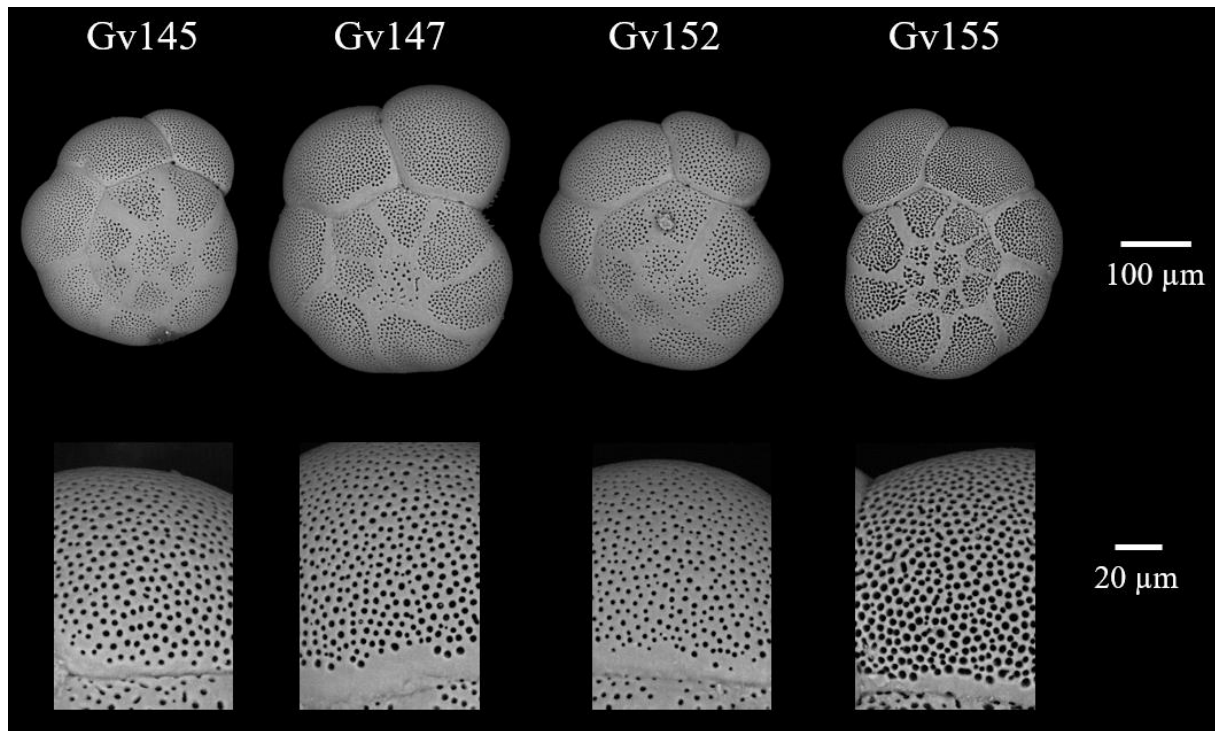


SUPPLEMENTARY MATERIAL



Supplementary figure 1. SEM images of spiral side and a 1000x magnification of the penultimate chamber for four individuals from Grevelingen station 1 identified T6 by molecular identification.

Supplementary Table 1. Oxygen Penetration Depth \pm sd and free H₂S detection depth \pm sd for each month in 2012 for both stations 1 and 2 (in mm).

Station	Month	OPD (mm)	H ₂ S depth (mm)
Station 1	January	1.7 \pm 0.3	16.5 \pm 3.2
	February	2 \pm 0.4	17.1 \pm 2.8
	March	1.7 \pm 0.3	17.5 \pm 0.7
	April	1 \pm 0.2	18.6 \pm 4.8
	May	1 \pm 0.1	9.9 \pm 2.2
	June	0.9 \pm 0.1	7.9 \pm 5.3
	July	0 \pm 0	0.1 \pm 0.1
	August	0 \pm 0	0.9 \pm 1.1
	September	0.7 \pm 0.1	0.3 \pm 0.2
	October	1.1 \pm 0.1	3.3 \pm 1.1
	November	0.4 \pm 0	10.3 \pm 1.9
	December	1.1 \pm 0.2	13.4 \pm 1.8
Station 2	January	2.8 \pm 0	19.6 \pm 2
	February	2.4 \pm 0.2	15.8 \pm 1.2
	March	2.6 \pm 0.6	20.3 \pm 3.3
	April	1.4 \pm 0.2	23.3 \pm 0.3
	May	1.6 \pm 0	26.4 \pm 1
	June	1.1 \pm 0.4	17.1 \pm 0.4
	July	1.3 \pm 0.4	1.1 \pm 0.8
	August	0 \pm 0	0.4 \pm 0.2
	September	1.2 \pm 0.2	0.8 \pm 0.2
	October	1.6 \pm 0.3	6.4 \pm 2.9
	November	1.3 \pm 0.2	9.1 \pm 3.3
	December	1.5 \pm 0.2	9.2 \pm 0.7

Supplementary Table 2. Living foraminiferal abundances for each replicate for the dominant species and total assemblage (ind./10cm³).

STATION 1

Species		<i>Elphidium selseyense</i>		<i>Ammonia sp. T6</i>		<i>Elphidium magellanicum</i>		<i>Trochammina inflata</i>		Total assemblage	
Year	Month	A	B	A	B	A	B	A	B	A	B
2011	August	2.1	0.4	1.4	1.1	0.0	0.0	0.0	0.0	4.2	2.5
2011	November	0.0	1.1	0.0	0.7	0.0	0.0	0.0	0.0	0.0	2.1
2012	January	2.8	7.4	0.7	5.7	0.0	0.4	0.4	2.1	5.0	18.0
2012	March	28.6	19.1	12.0	13.8	29.4	13.8	2.1	0.7	75.7	48.5
2012	May	141.5	531.6	13.8	4.6	63.0	129.8	0.4	3.2	222.1	677.6
2012	July	76.0	247.9	8.1	12.4	3.9	3.5	0.0	0.0	88.4	270.6
2012	September	21.2	38.2	0.7	3.9	0.0	0.0	0.0	0.7	21.9	46.0
2012	November	0.7	1.4	0.4	0.4	0.0	0.0	0.0	0.0	1.4	1.8

STATION 2

Species		<i>Elphidium selseyense</i>		<i>Ammonia sp. T6</i>		<i>Elphidium magellanicum</i>		<i>Trochammina inflata</i>		Total assemblage	
Year	Month	A	B	A	B	A	B	A	B	A	B
2011	August	53.8	95.8	72.5	91.6	0.0	0.0	10.6	18.7	140.1	208.0
2011	November	33.2	71.4	61.9	59.8	0.0	0.0	13.1	10.6	111.1	146.4
2012	January	122.0	201.6	263.1	189.2	1.1	0.7	142.5	100.4	545.4	501.9
2012	March	225.6	203.7	275.2	152.8	41.0	56.6	73.9	76.0	624.2	500.5
2012	May	254.6	321.8	165.9	128.4	120.6	111.4	42.1	30.1	602.3	607.3
2012	July	318.3	246.9	172.2	144.7	39.6	36.1	35.4	27.6	589.9	473.2
2012	September	415.2	315.8	141.1	63.7	97.3	46.7	14.9	17.3	681.2	453.8
2012	October	104.7	92.7	87.0	111.1	2.1	1.4	5.3	9.5	205.8	217.2
2012	November	29.4	32.5	66.5	29.7	3.9	4.2	5.0	2.5	108.9	73.2
2012	December	281.2	223.2	78.9	77.1	16.3	34.7	15.9	9.5	405.3	350.5

Supplementary Table 3. Living foraminiferal abundances for each replicate, year and month for all the species of the assemblage (ind./10cm³).

Year	Station	Replicate	Month	<i>Ammonia falsobecarii</i>	<i>Ammonia</i> sp. T1	<i>Ammonia</i> sp. T2	<i>Ammonia</i> sp. T3	<i>Ammonia</i> sp. T6	<i>Bulimina denudata</i>	<i>Bulimina elongata</i>	<i>Bulimina marginata</i>	<i>Bulimina</i> sp.	<i>Cassidulina</i> sp.	<i>Elphidium seseyense</i>	<i>Elphidium magellanicum</i>	<i>Elphidium magellanicum</i> (encrusted)	<i>Elphidium margaritaceum</i>	<i>Elphidium</i> sp.	<i>Epistominella</i> sp.	<i>Haynesina depressula</i>	<i>Haynesina germanica</i>	<i>Hopkinsina</i> sp.	<i>Leptohalysis</i> sp.	Non determined	<i>Nonion</i> sp.	<i>Nonionella</i> sp.	<i>Quinqueloculina leavigata</i>	<i>Quinqueloculina</i> sp.	<i>Stainforthia</i> sp.	<i>Textularia</i> sp.	<i>Trochammina inflata</i>
2011	1	A	August	0.0	0.0	0.0	0.0	1.4	0.0	0.0	0.0	0.0	0.0	2.1	0.0	0.0	0.0	0.0	0.0	0.0	0.0	0.0	0.4	0.0	0.0	0.0	0.4	0.0	0.0	0.0	
2011	1	A	November	0.0	0.0	0.0	0.0	0.0	0.0	0.0	0.0	0.0	0.0	0.0	0.0	0.0	0.0	0.0	0.0	0.0	0.0	0.0	0.0	0.0	0.0	0.0	0.0	0.0	0.0	0.0	
2012	1	A	January	0.0	0.0	0.0	0.0	0.7	0.0	0.0	0.0	0.0	0.0	2.8	0.0	0.0	0.0	0.0	0.0	1.1	0.0	0.0	0.0	0.0	0.0	0.0	0.0	0.0	0.0	0.4	
2012	1	A	March	0.4	0.0	1.1	0.0	12.0	0.4	0.0	0.0	0.0	0.0	28.6	29.4	0.0	0.0	0.4	0.0	0.4	0.0	0.0	0.0	0.0	0.0	0.0	0.0	0.7	0.0	0.4	2.1
2012	1	A	May	0.0	0.0	0.0	0.0	13.8	1.1	0.0	0.4	0.0	0.0	141.5	47.7	15.2	0.0	0.0	0.0	0.0	0.0	0.0	0.4	0.0	0.4	1.1	0.0	0.4	0.0	0.4	
2012	1	A	July	0.0	0.0	0.0	0.0	8.1	0.0	0.0	0.0	0.0	0.0	76.0	1.8	2.1	0.0	0.0	0.0	0.0	0.0	0.0	0.0	0.0	0.0	0.0	0.0	0.4	0.0	0.0	
2012	1	A	September	0.0	0.0	0.0	0.0	0.7	0.0	0.0	0.0	0.0	0.0	21.2	0.0	0.0	0.0	0.0	0.0	0.0	0.0	0.0	0.0	0.0	0.0	0.0	0.0	0.0	0.0	0.0	
2012	1	A	November	0.0	0.0	0.4	0.0	0.4	0.0	0.0	0.0	0.0	0.0	0.7	0.0	0.0	0.0	0.0	0.0	0.0	0.0	0.0	0.0	0.0	0.0	0.0	0.0	0.0	0.0	0.0	
2011	1	B	August	0.0	0.0	0.0	0.0	1.1	0.0	0.0	0.0	0.0	0.0	0.4	0.0	0.0	1.1	0.0	0.0	0.0	0.0	0.0	0.0	0.0	0.0	0.0	0.0	0.0	0.0	0.0	
2011	1	B	November	0.0	0.0	0.0	0.0	0.7	0.0	0.0	0.0	0.0	0.0	1.1	0.0	0.0	0.0	0.0	0.0	0.0	0.0	0.0	0.0	0.0	0.0	0.0	0.0	0.4	0.0	0.0	
2012	1	B	January	0.0	0.0	0.7	0.0	5.7	0.0	0.0	0.0	0.0	0.0	7.4	0.4	0.0	0.4	0.0	0.0	0.0	0.0	0.0	0.0	0.0	0.0	0.0	1.1	0.4	0.0	0.0	2.1
2012	1	B	March	0.0	0.0	0.0	0.0	13.8	0.0	0.0	0.0	0.0	0.0	19.1	13.8	0.0	0.0	0.0	0.0	0.4	0.0	0.0	0.0	0.4	0.0	0.0	0.4	0.0	0.0	0.7	
2012	1	B	May	0.0	0.0	0.0	0.0	4.6	0.4	0.0	0.0	0.0	0.0	531.6	93.4	36.4	0.4	0.0	0.7	0.4	0.0	0.0	0.0	2.1	0.0	0.4	0.4	1.1	2.5	0.4	3.2
2012	1	B	July	0.0	0.0	0.4	0.0	12.4	0.4	0.0	0.7	0.0	0.0	247.9	2.1	1.4	1.4	0.4	0.0	0.0	0.0	0.0	0.7	0.0	0.0	0.7	0.4	1.8	0.0	0.0	
2012	1	B	September	0.0	0.0	0.0	0.0	3.9	0.0	0.0	0.0	0.0	0.0	38.2	0.0	0.0	0.4	0.0	0.0	0.0	0.0	0.0	0.0	0.0	0.0	0.0	0.0	2.5	0.4	0.7	
2012	1	B	November	0.0	0.0	0.0	0.0	0.4	0.0	0.0	0.0	0.0	0.0	1.4	0.0	0.0	0.0	0.0	0.0	0.0	0.0	0.0	0.0	0.0	0.0	0.0	0.0	0.0	0.0	0.0	
2011	2	A	August	0.0	0.0	0.0	0.0	72.5	0.0	0.0	0.0	0.0	0.0	53.8	0.0	0.0	0.7	0.0	0.0	0.0	0.4	0.0	1.1	0.0	0.0	0.4	0.0	0.4	0.0	0.4	10.6
2011	2	A	November	0.0	0.0	0.0	0.0	61.9	0.0	0.0	0.0	0.0	0.0	33.2	0.0	0.0	0.7	0.0	0.0	0.0	0.0	0.0	0.0	1.1	0.0	0.0	0.0	1.1	0.0	0.0	13.1
2012	2	A	January	0.7	0.0	2.5	8.8	263.1	0.0	1.1	0.0	0.0	0.0	122.0	1.1	0.0	0.7	0.4	1.1	0.0	0.0	0.0	0.0	0.7	0.4	0.0	0.0	0.0	0.4	142.5	
2012	2	A	March	0.0	0.0	1.4	0.0	275.2	0.0	0.0	0.0	1.8	0.0	225.6	40.0	1.1	0.4	0.0	0.4	0.0	0.0	0.0	0.0	0.7	0.7	0.0	1.4	0.0	1.8	73.9	
2012	2	A	May	0.0	0.0	1.1	0.0	165.9	0.0	0.0	0.4	3.9	0.0	254.6	38.6	82.1	0.4	0.0	1.4	0.0	0.0	0.0	0.0	0.0	0.0	3.2	0.4	2.1	1.4	5.0	42.1
2012	2	A	July	0.0	0.0	1.8	0.0	172.2	6.0	2.1	0.4	0.4	0.0	318.3	3.9	35.7	1.4	0.0	0.4	0.7	0.0	0.0	0.0	0.0	0.0	0.4	0.0	7.1	1.8	2.1	35.4

2012	2	A	September	0.0	0.7	0.0	0.0	141.1	0.0	1.4	0.4	0.0	0.0	415.2	16.3	81.0	0.4	0.4	3.2	0.0	0.0	1.4	0.0	0.0	0.0	0.0	0.4	1.4	3.2	14.9	
2012	2	A	October	0.0	0.4	0.7	0.0	87.0	1.1	2.5	0.4	0.0	0.0	104.7	0.0	2.1	0.0	0.0	0.0	0.0	0.0	0.0	0.4	0.0	0.0	0.0	0.0	0.0	1.4	5.3	
2012	2	A	November	0.0	0.0	0.0	0.0	66.5	0.7	0.0	0.4	0.0	0.0	29.4	0.0	3.9	0.4	0.0	0.0	0.0	0.0	2.1	0.0	0.0	0.0	0.0	0.0	0.7	0.0	5.0	
2012	2	A	December	0.7	0.0	1.8	0.0	78.9	1.1	0.7	1.4	0.0	0.0	281.2	0.4	15.9	0.0	0.0	0.7	0.4	0.0	1.8	0.0	0.4	0.0	0.4	0.4	0.4	3.2	15.9	
2011	2	B	August	0.0	0.0	0.0	0.0	91.6	0.0	0.0	0.0	0.4	0.0	95.8	0.0	0.0	0.0	0.0	0.0	0.7	0.4	0.0	0.0	0.4	0.0	0.0	0.0	0.0	0.0	18.7	
2011	2	B	November	0.0	0.0	0.0	0.0	59.8	0.0	0.0	0.0	0.4	0.0	71.4	0.0	0.0	1.1	0.0	0.0	1.1	0.0	0.0	0.0	1.1	0.0	0.0	1.1	0.0	0.0	10.6	
2012	2	B	January	0.0	0.4	2.1	0.0	189.2	0.0	0.4	0.0	0.0	0.0	201.6	0.7	0.0	0.0	1.1	0.0	0.0	0.0	0.0	0.0	0.0	0.0	0.0	5.7	0.0	0.4	100.4	
2012	2	B	March	0.0	0.0	1.1	0.0	152.8	0.4	0.0	0.0	2.1	0.0	203.7	56.2	0.4	1.1	0.7	1.4	0.0	0.0	0.0	0.0	1.1	0.4	0.0	1.8	0.7	0.7	76.0	
2012	2	B	May	0.0	0.0	1.4	0.0	128.4	2.1	0.0	0.7	0.0	0.4	321.8	25.8	85.6	0.0	0.0	0.4	0.4	0.0	0.0	0.0	1.8	0.0	2.8	1.1	0.7	1.1	2.8	30.1
2012	2	B	July	0.0	1.1	1.4	0.0	144.7	0.4	1.8	1.8	2.1	0.0	246.9	8.1	27.9	0.7	0.0	1.1	1.1	0.0	0.0	0.0	0.0	0.4	2.1	1.1	0.7	2.5	27.6	
2012	2	B	September	0.0	0.0	0.4	0.0	63.7	1.8	0.7	0.0	0.0	0.0	315.8	8.1	38.6	1.4	0.4	2.1	0.0	0.4	0.0	0.0	0.0	0.0	0.0	0.4	1.4	1.4	17.3	
2012	2	B	October	0.0	0.7	1.1	0.0	111.1	0.4	0.0	0.0	0.0	0.0	92.7	1.1	0.4	0.0	0.0	0.4	0.0	0.0	0.0	0.0	0.0	0.0	0.0	0.0	0.0	0.0	9.5	
2012	2	B	November	0.0	0.0	0.4	0.0	29.7	1.1	0.0	0.4	0.0	0.0	32.5	1.8	2.5	0.4	0.0	0.7	0.0	0.0	0.0	0.0	0.0	0.0	0.0	0.4	0.4	0.7	2.5	
2012	2	B	December	0.0	0.0	0.0	0.0	77.1	1.4	0.7	0.0	0.0	0.0	223.2	5.7	29.0	1.1	0.0	1.4	0.0	0.0	0.4	0.0	0.0	0.0	0.4	0.4	0.0	0.4	9.5	