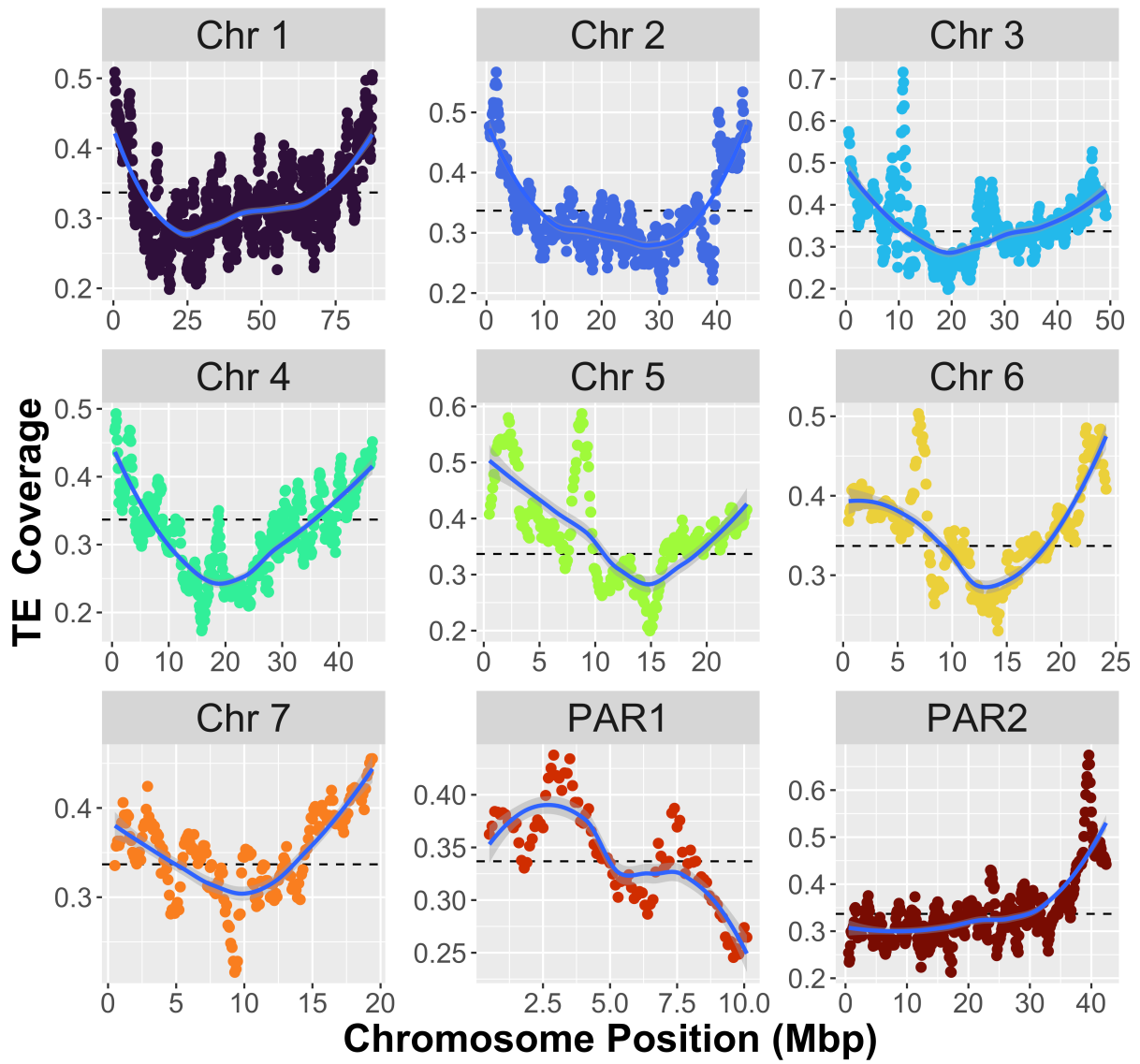
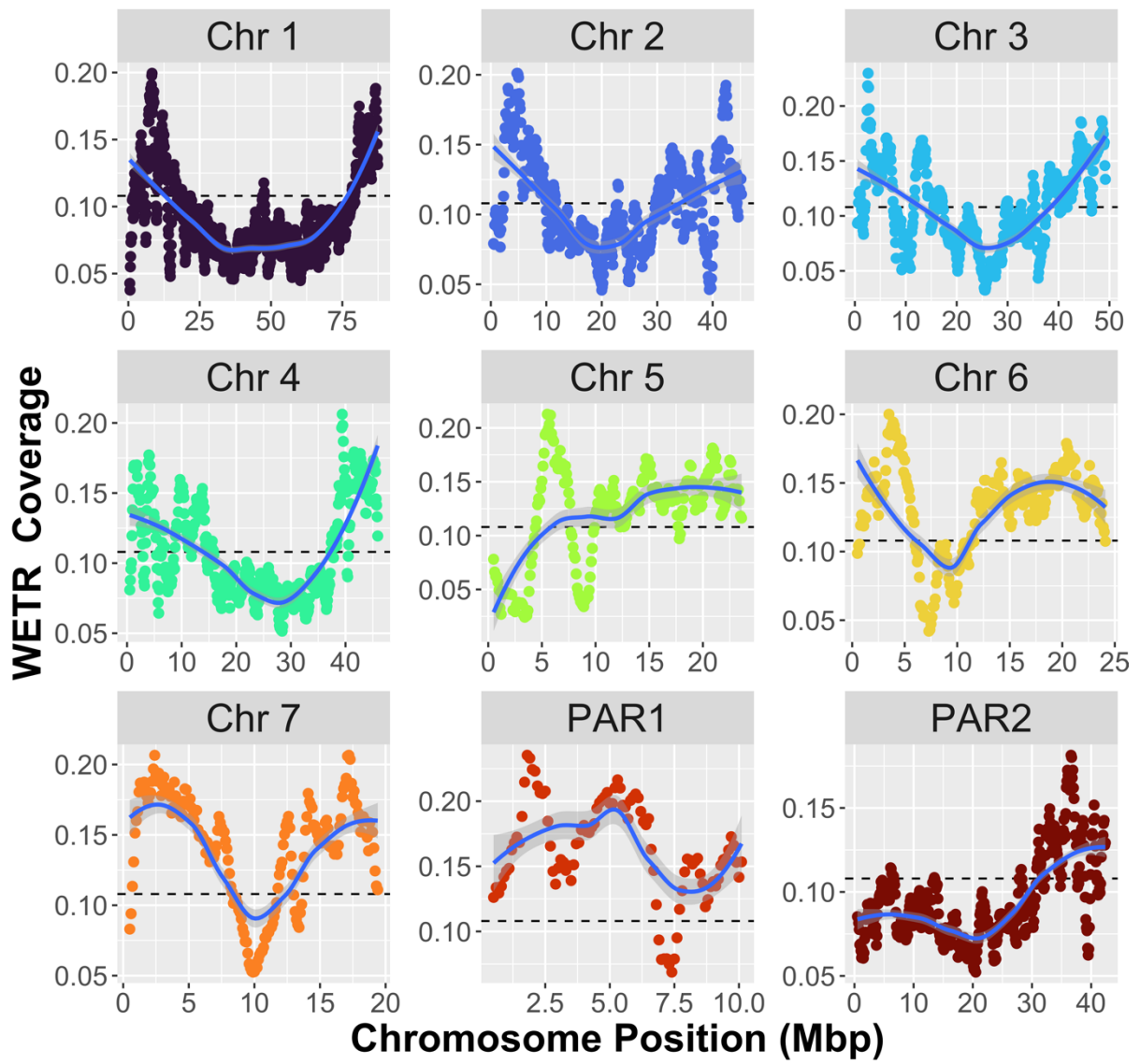


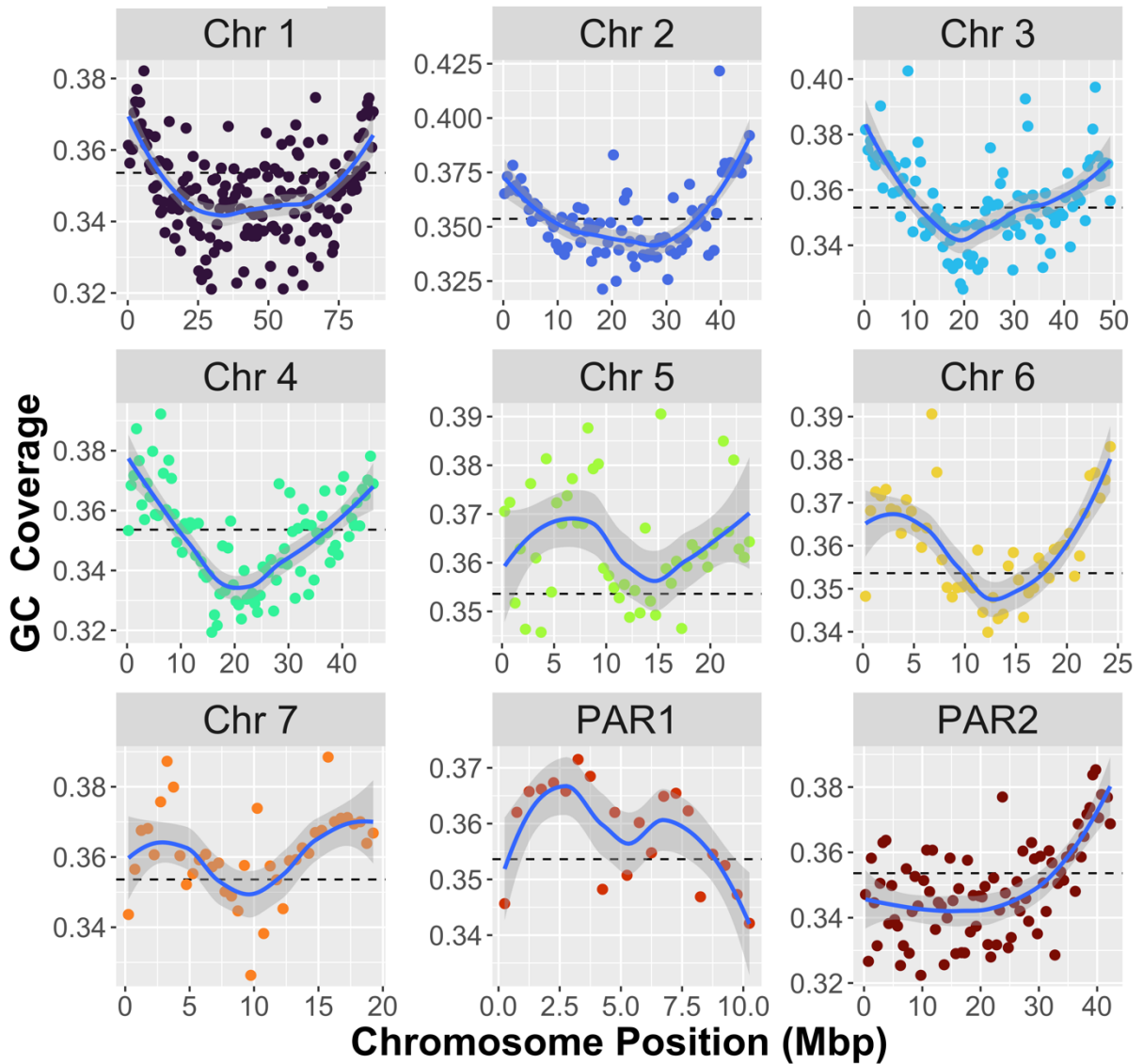
A



B



C



Supplementary Figure 1 – Coverage plots of (A) Transposable Elements (TEs), (B) W-Elements and tandem repeats (WETR) and (C) GC content across *S. mansoni* chromosomes. All data points plotted in the same windows as Figure 1 (1Mbp windows with 100kbp steps). Black dashed line indicates genomic mean and curved blue line implemented with the `geom_smooth` function to demonstrate trends across chromosomes.