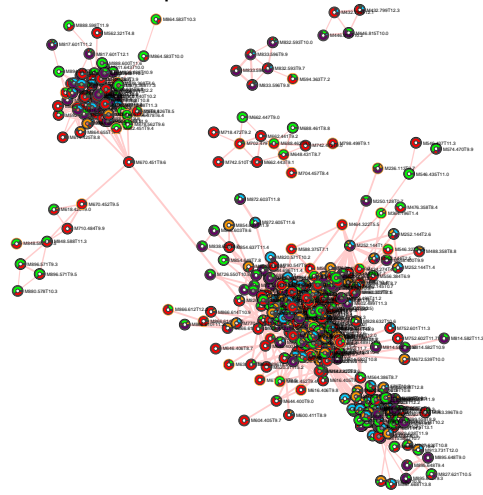
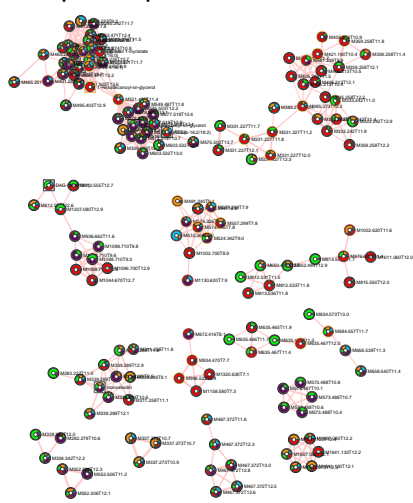


Betaine lipids



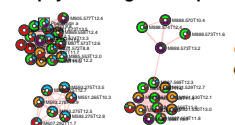
Aliphatic compounds



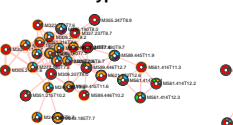
Steroids and derivatives



Chlorophyll and degradation products



Methoxyphenols



Glycerolipids



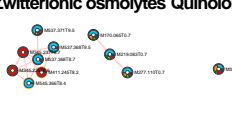
Benzene and derivatives



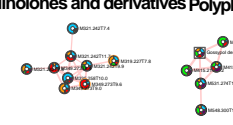
Carbohydrates



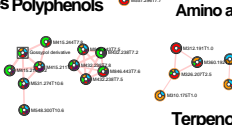
Zwitterionic osmolytes



Quinolones and derivatives



Polyphenols



Amino acids



Glycosyldiacylglycerols



Monoacylglycerols



Polysaccharides



Phenylpropanoic acids



Terpenoids

