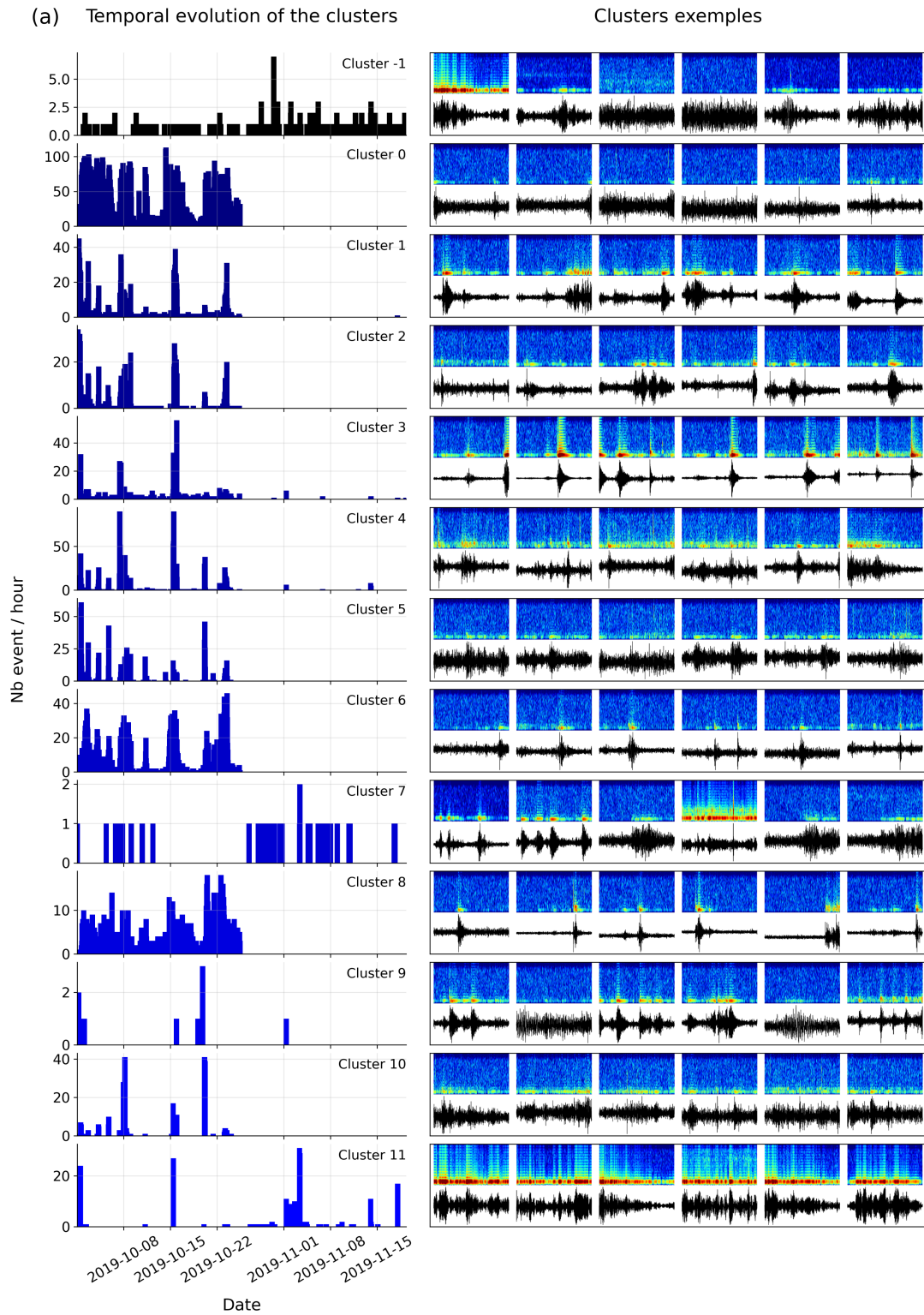
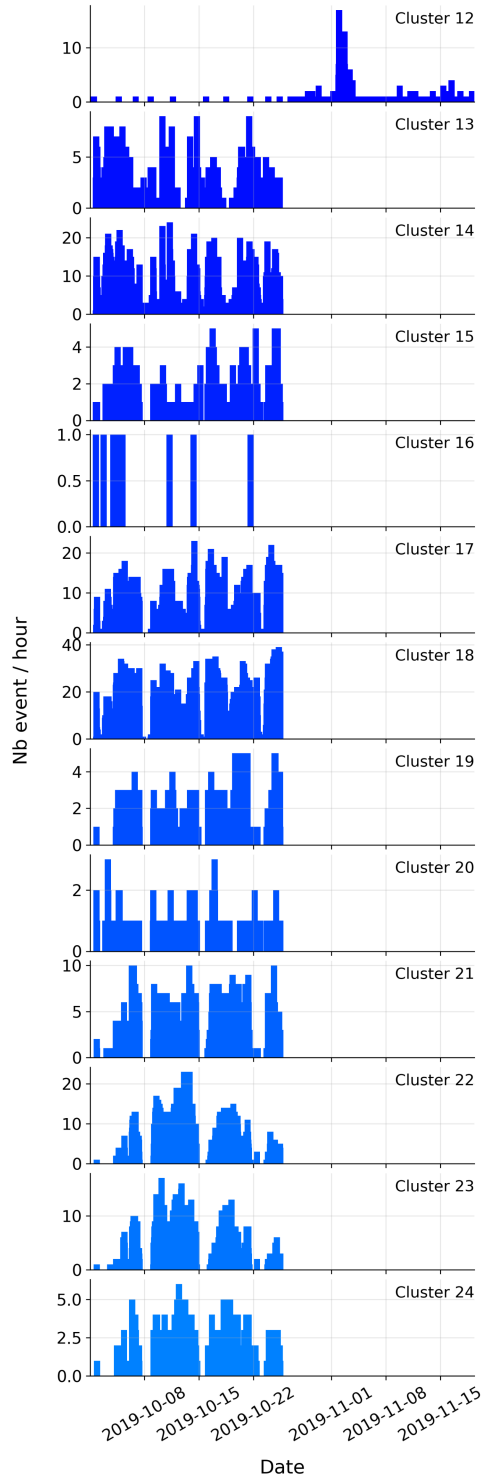


< see attached document; large size figure; "FigureS1.pdf" >

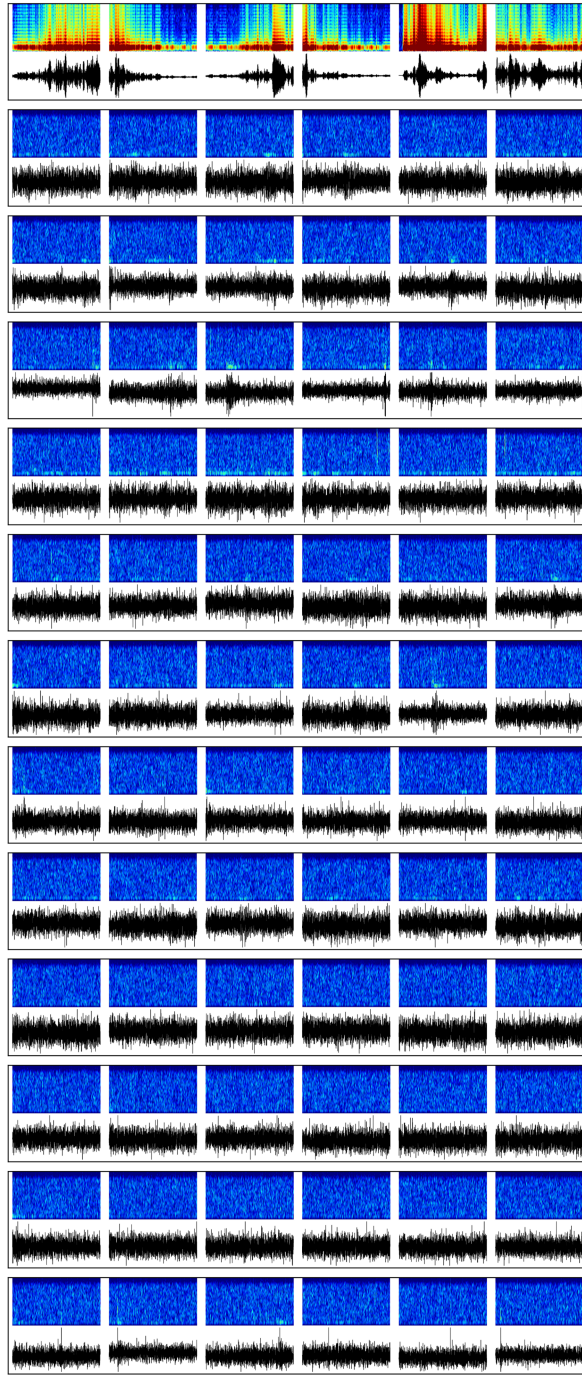
Figure S1. Input images representing 30s-length windows of seismic signal and spectrogram are plotted on the t-sne embedding. A high-quality pdf of this figure is available on the Zenodo repository (Supplementary_Figures.zip) : <https://doi.org/10.5281/zenodo.8189838>. To limit the density of images in the plot, images with distance to other images lower than 1.5 are not represented.

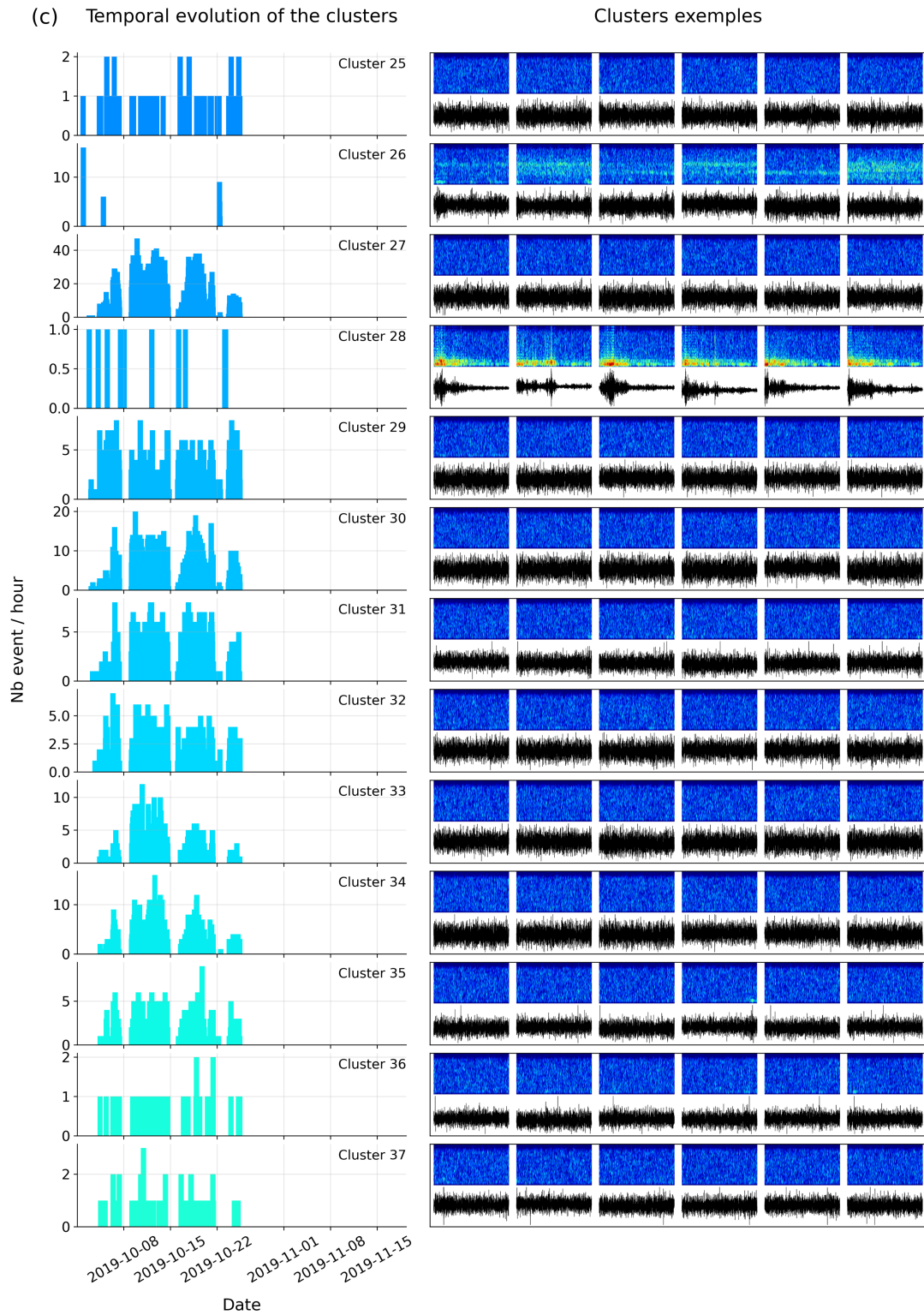


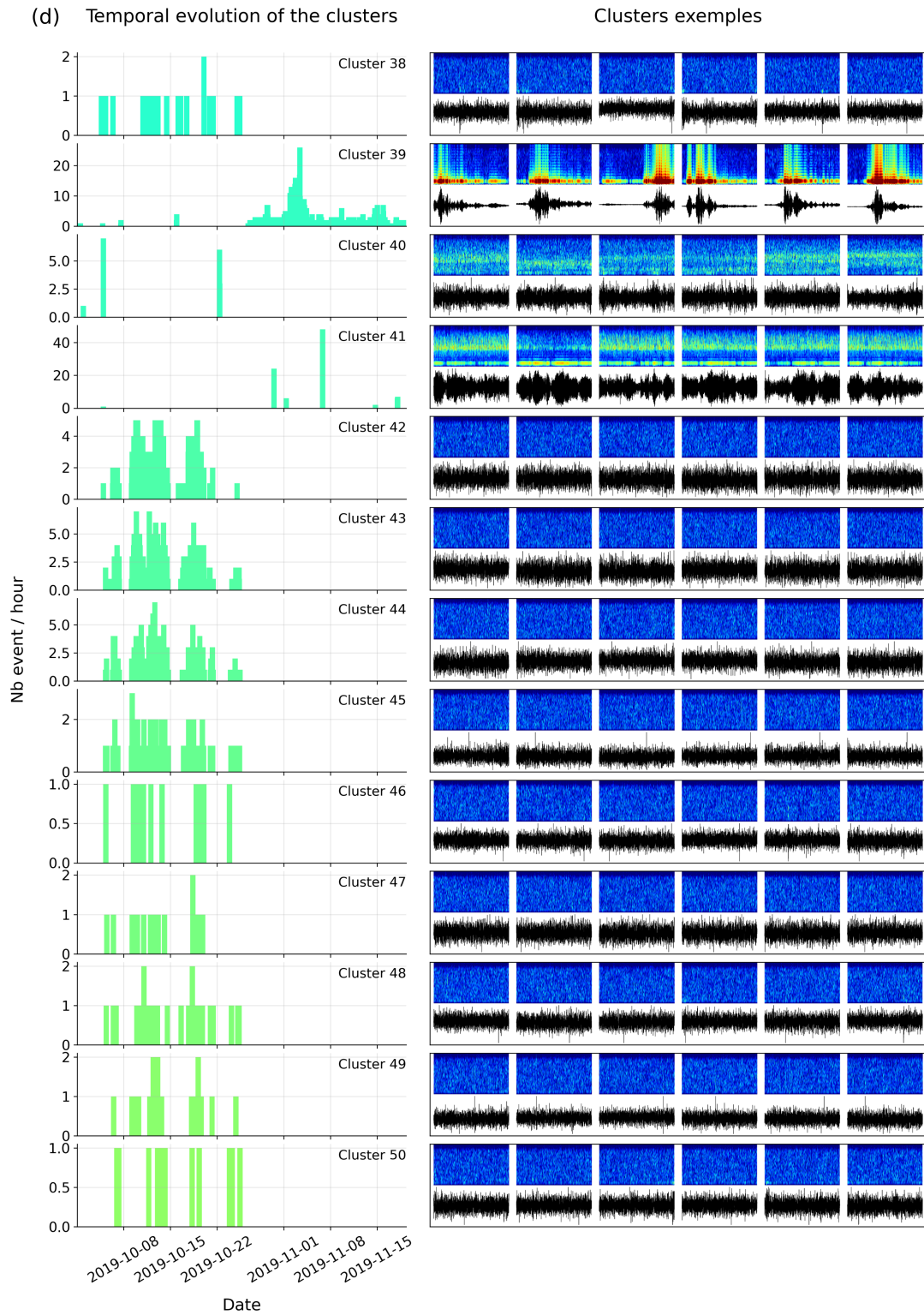
(b) Temporal evolution of the clusters

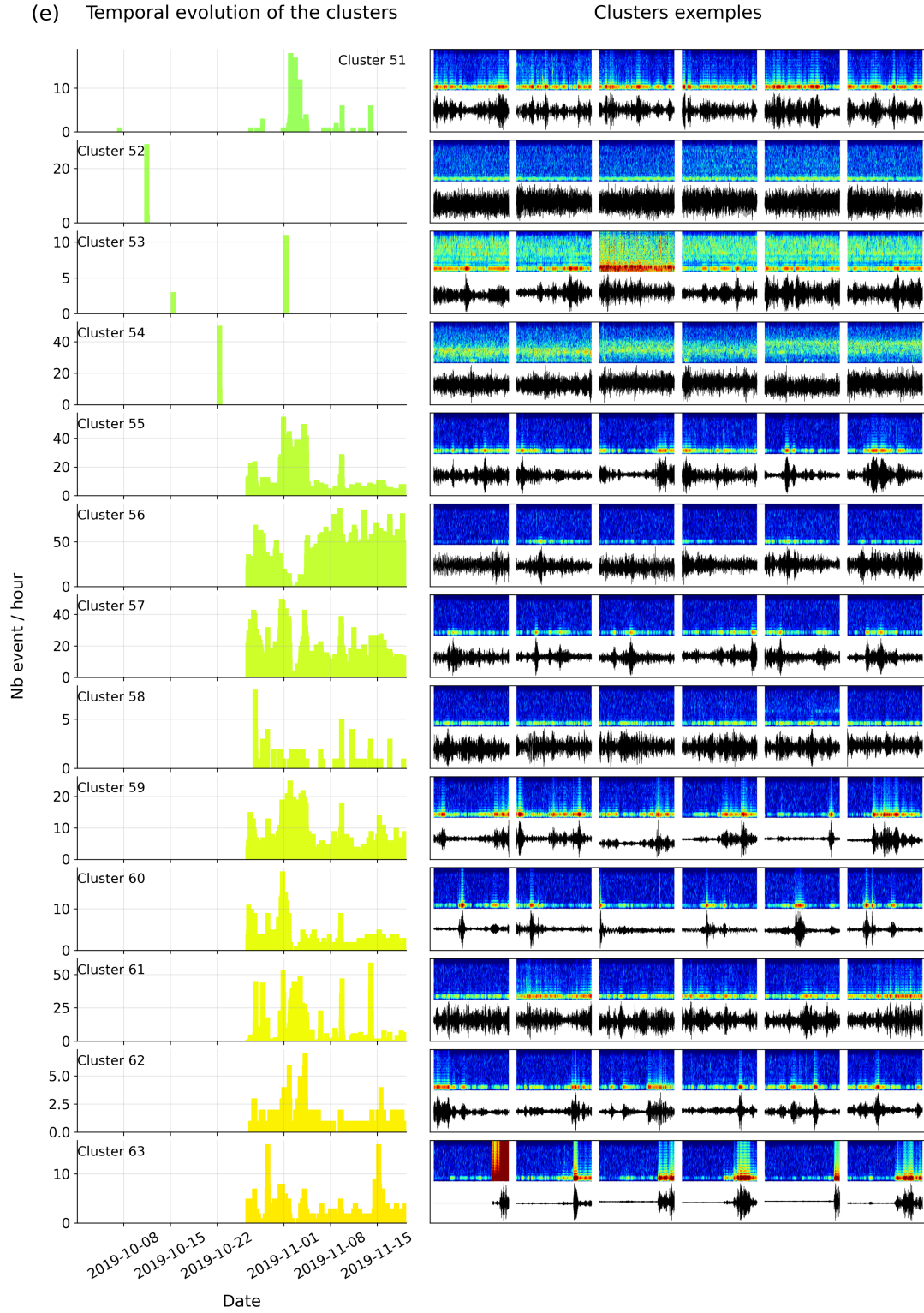


Clusters exemples

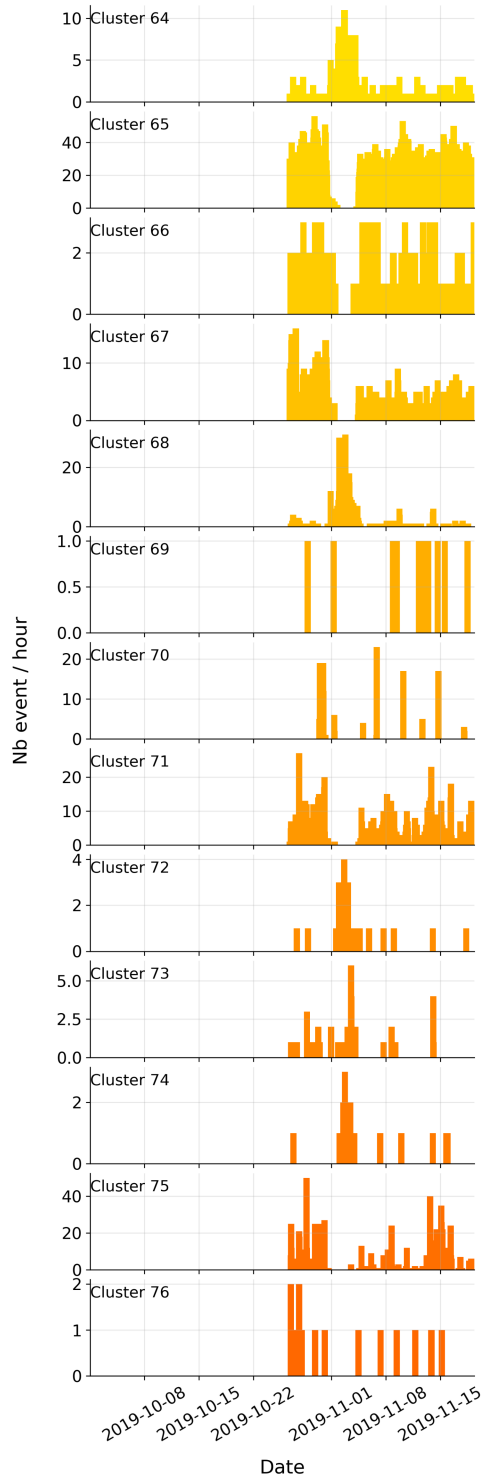




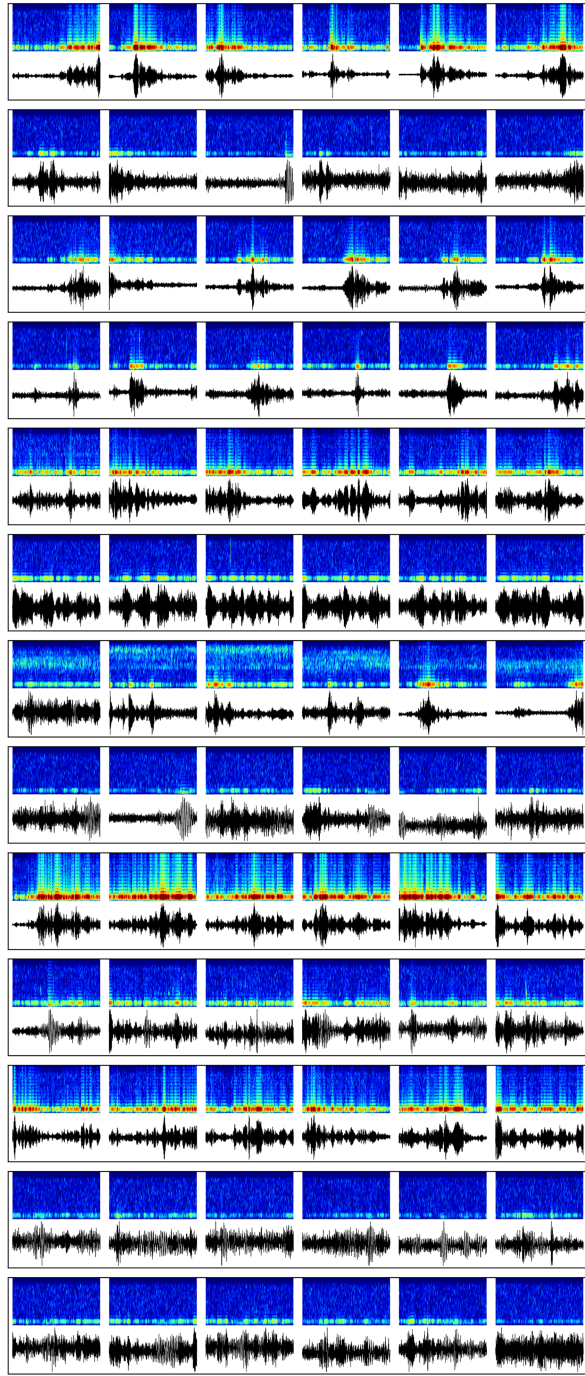




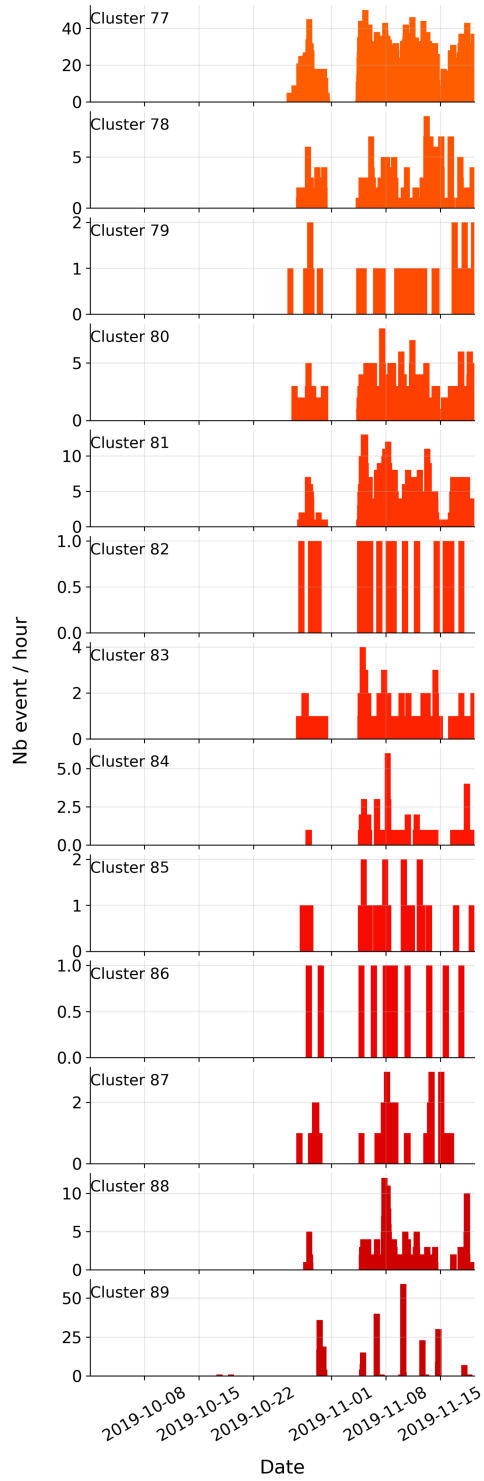
(f) Temporal evolution of the clusters



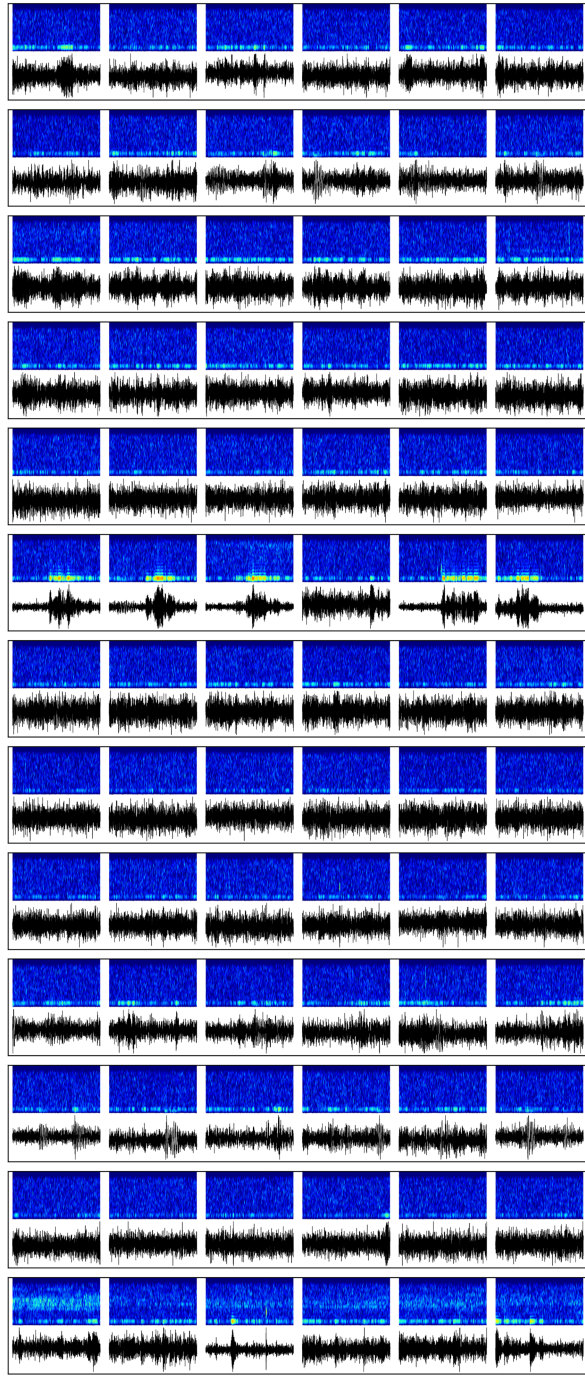
Clusters exemples



(g) Temporal evolution of the clusters



Clusters exemples



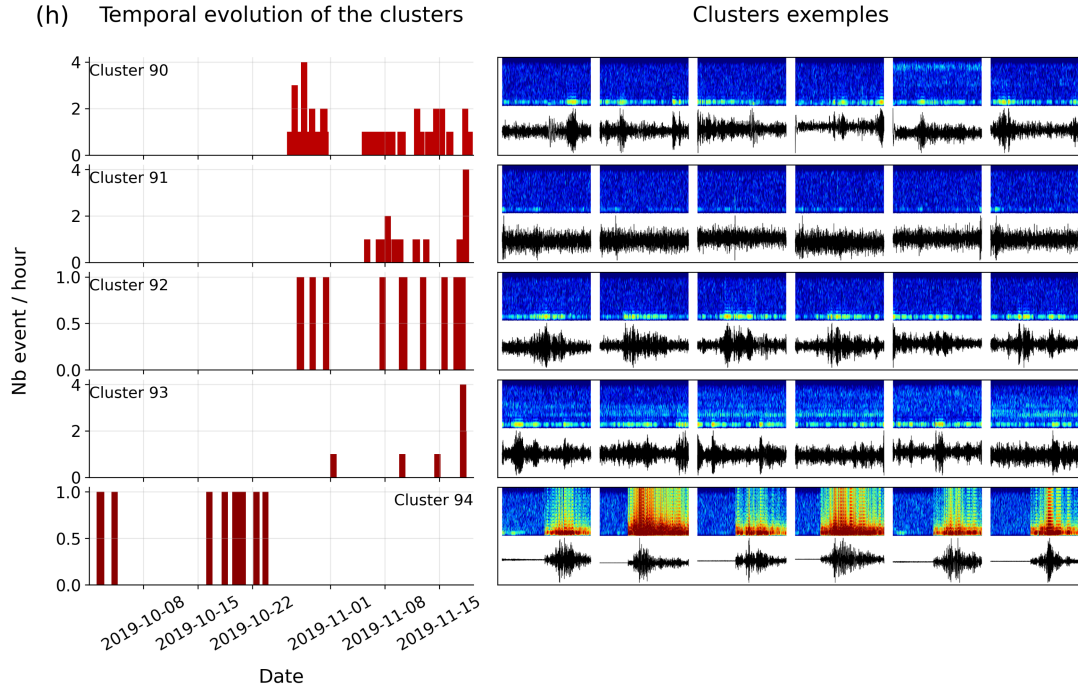


Figure S2. Number of detected seismic events per hour for all the clusters. The right subplot gives a representation of the clustered signals. A full high-quality pdf version is available on the Zenodo repository (Supplementary_Figures.zip) : <https://doi.org/10.5281/zenodo.8189838> (a) Clusters -1 to 11. (b) Clusters 12 to 24. (c) Clusters 25 to 37. (d) Clusters 38 to 50. (e) Clusters 51 to 63. (f) Clusters 64 to 76. (g) Clusters 77 to 89. (h) Clusters 90 to 94.