

**Figure S1** : Estimation of the bacterial species richness (Chao1 estimator) in all the studied coral species.

Cluster dendrogram with AU/BP values (%)

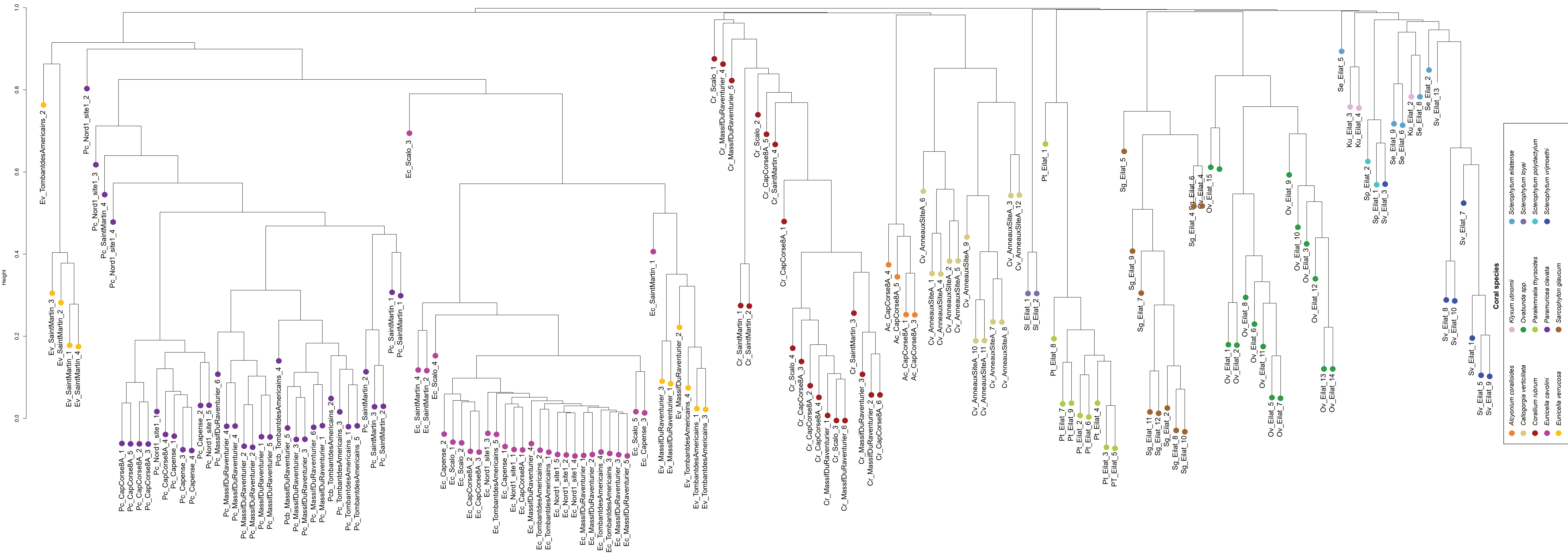
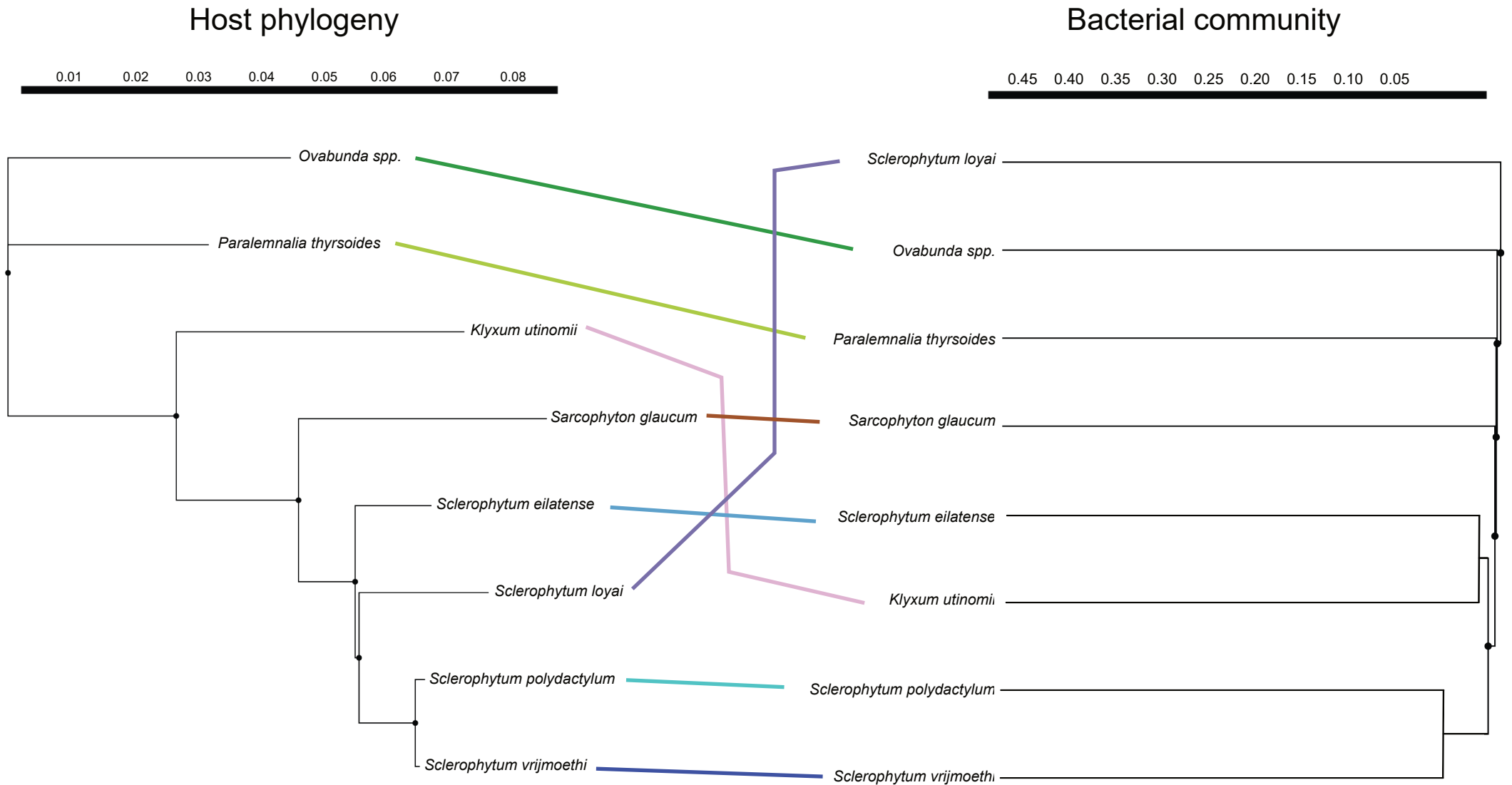


Figure S2 : Dendrogram (UPGMA hierarchical cluster) of the Bray-Curtis dissimilarity matrix based on the bacterial community composition of all coral samples



**Figure S3 :** Phylosymbiosis in Octocorals. Juxtaposition of the coral host phylogenetic tree and the microbiota dendrogram for the Red Sea coral species