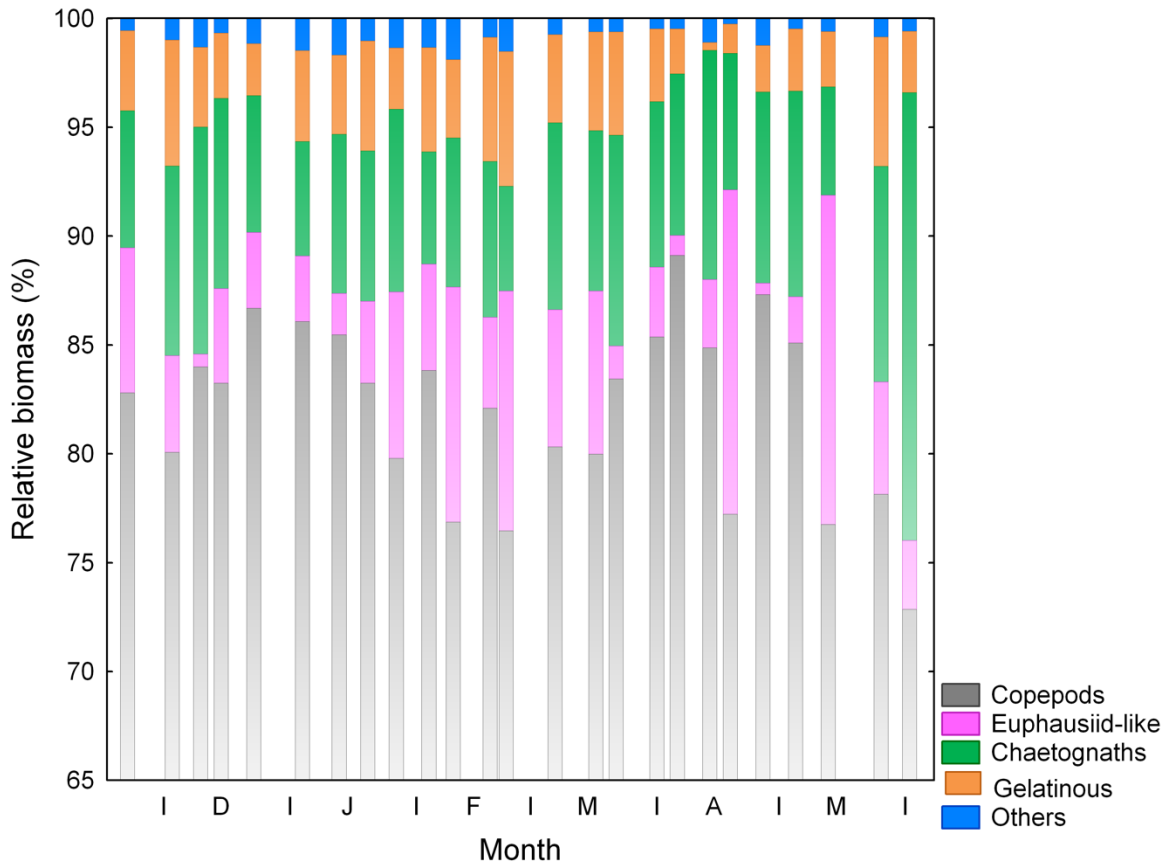
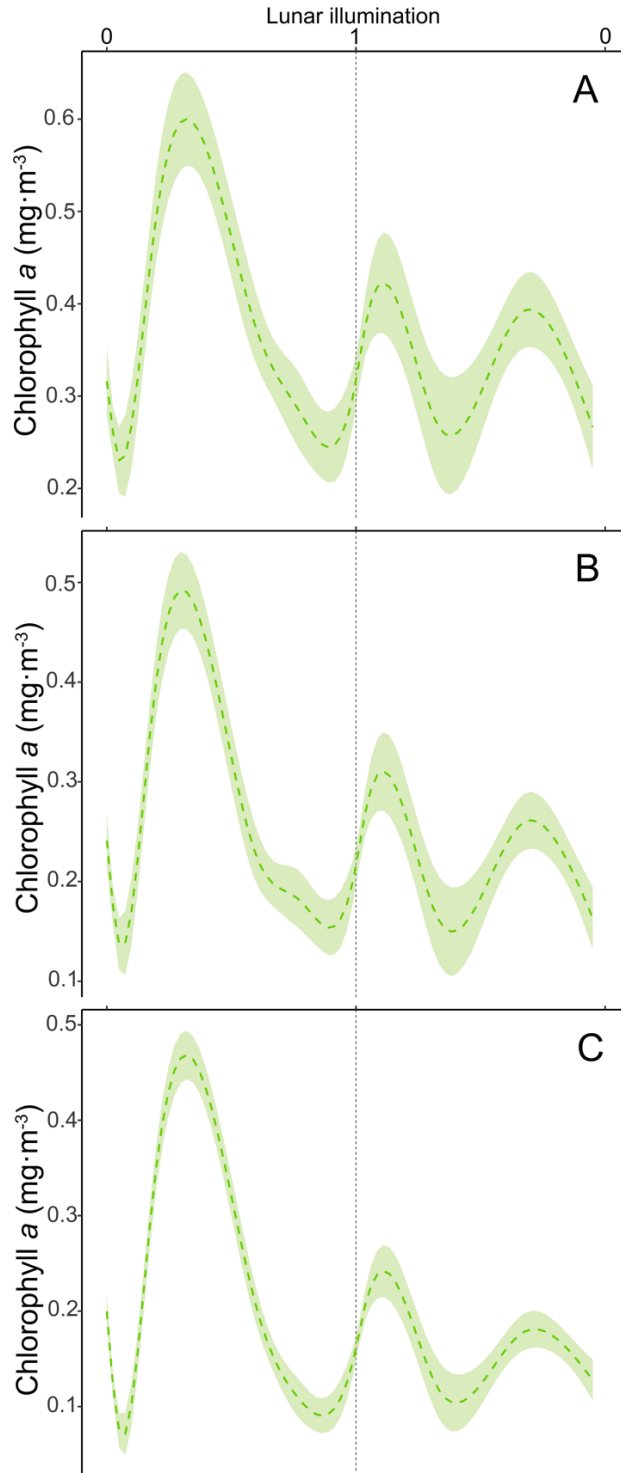


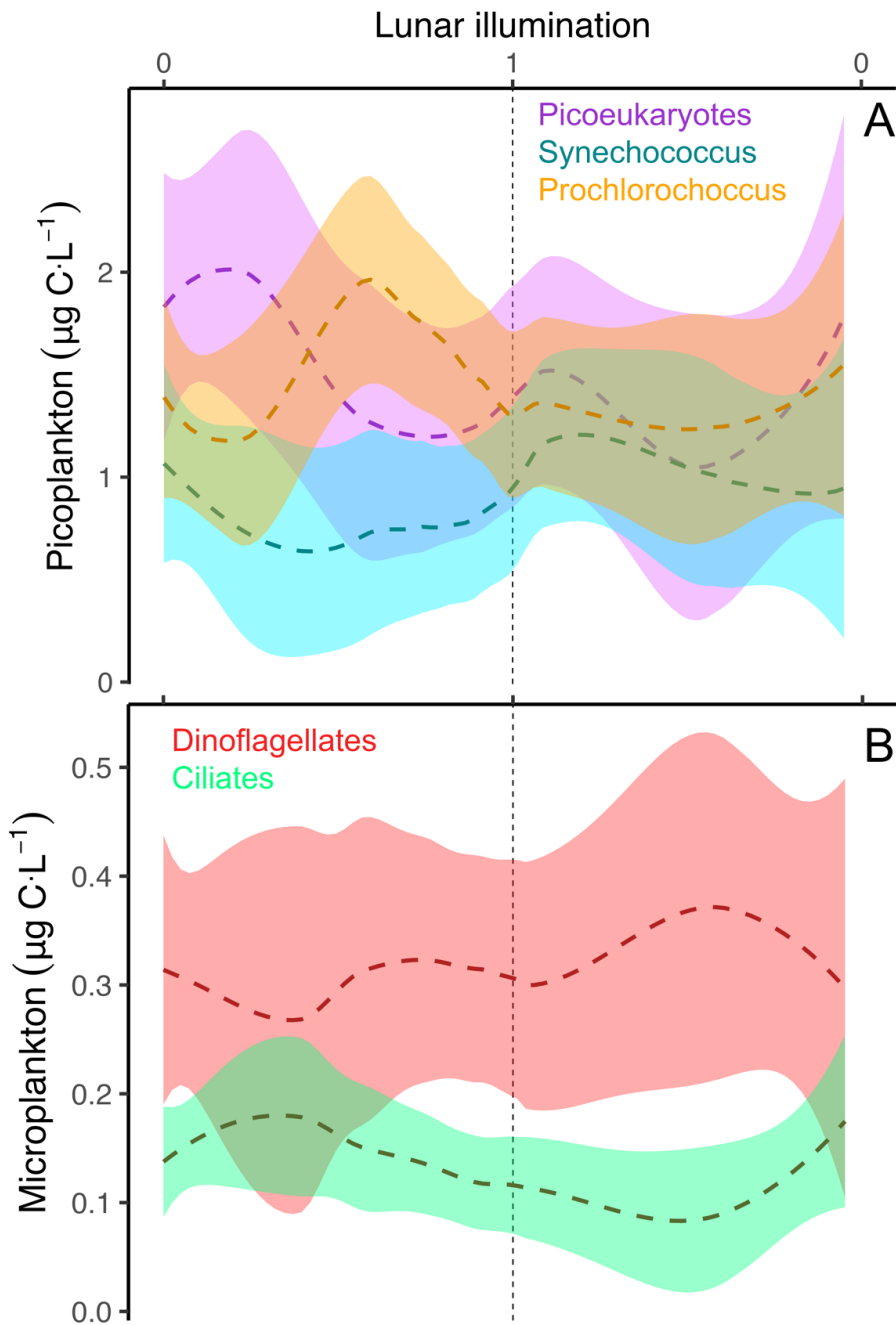
Supplementary Information



Supplementary Figure S1.- Relative biomass (%) of the main zooplankton categories during the period of study (see Material and Methods for explanation). The so-called euphausiid-like category groups euphausiids, mysids, and mysis larvae of decapods as they have as similar shape recognized by the software.



Supplementary Figure S2.- Modelled lunar cycle using the LOESS method (colored dashed lines) for (A) chlorophyll *a* during the sampled period in the 70-100 m layer, (B) the 100-150 m layer, and (C) 100-200 m layer. Vertical black dashed line stands for the full moon (lunar illumination of 1). The shadowed area corresponds to the span (see material and methods).



Supplementary Figure S3.- (A) Biomass ($\mu\text{g C L}^{-1}$) of autotrophic picoeukaryotes, *Synechococcus*, and *Prochlorococcus* related to the lunar cycle as modelled using the LOESS method. Vertical black dashed line stands for the full moon (lunar illumination of 1). The shadowed area corresponds to the span (see material and methods).